

Best Partner, First Company

Best Partner, First Company



Gran Seoul 33 Jongro Jongno-gu Seoul, Korea
tel: 82-2-2154-1114
fax: 82-2-2154-0823
homepage: <http://www.gsconst.co.kr>



Contents

We lead WORLD	03
We connect WORLD	04
We make WORLD	06
CEO's Message	08
GS Group	10
Vision & Core Values	12
Sustainability Management	14
Social Responsibilities	16
GS E&C R&D	18
Digitalized System	20
GS E&C Business Area	22
GS E&C History · GS E&C	26
Plant	30
Architecture	54
Power	90
Infra	100
Leisure	118
Major References	124
Global Network	126
Epilogue	127

COMPANY INFORMATION

CONSTRUCTION PERFORMANCE

GLOBAL NETWORK

We
lead
the world

The advanced technology of GS E&C touches people all over the world.

The company that is leading 6 billion people to a new hope.

We connect the **WORLD**



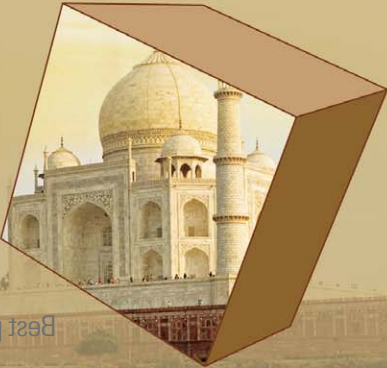
GS E&C has connected the main artery
to the vast Indian continent.
Our company is opening a new chapter
for tomorrow in every corner of the world by
breathing new life to abandoned backwoods.



Best partner_ **GS E&C**

3rd National Expressway on NH-2,
Surat - Manor Tollway Pkg. No.2,
2nd National Expressway HR-1,
Ahmedabad-Vadodara Expressway Ph-2
_ India

We connect the **WORLD**



Best partner GS E&C

Ahmedabad-Vadodra Expressway Ph-2
2nd National Expressway HR-1
Surat - Mahad Tollway Ph-2
3rd National Expressway on NH-5

GS E&C has connected the main artery
to the vast Indian continent.
Our company is opening a new chapter
for tomorrow in every corner of the world by
breathing new life to abandoned backwoods.



We make the **WORLD**

The oil-deficient country of Korea has exported

Petrochemical plant technology to Egypt.

With technology among global network,

GS E&C is creating a greater world for the future.

First company_ **GS E&C**

E-LAB _Alexandria, Egypt



We make the **WORLD**

First company GS E&C
E-178 "Alexandria" Egypt



The oil-deficient country of Korea has exported

Petrochemical plant technology to Egypt.

With technology among global network,

GS E&C is creating a greater world for the future.



CEO's Message

Aiming to be
a reliable
partner
on creativity
and passion

“
Our GS E&C has been constructing the world value with creative passion,
through which GS E&C is aiming for 'Best Partner & First Company'
which can gain reliability from all interested parties,
such as customers, shareholders and society, etc.
”



GS E&C has made growth as the nation's best level construction company in all project areas, such as plant, power generation, environment, civil engineering, architecture and housing, etc. since its foundation in 1969.

This company is in pursuit of sustainable growth as a top priority, and doing its utmost effort to leap towards a full-scale Global Top Tier.

For this purpose, GS E&C is making a full preparation for securing Global core capabilities along with strategic nurturing of the new growth project, not to mention excellent performance at the existing major business.

Once again, I'd like to extend my heartfelt thanks to you for showing deep affection and concern for our GS E&C; hereupon, I sincerely promise that our company will be reborn as a sustainable, reliable Global GS E&C.

Thank you.

Lim Byeong Yong, President & CEO
GS Engineering & Construction

A handwritten signature in black ink, consisting of stylized Korean characters, located to the right of the printed name.

Value
No.1
GS

Securing the Top 5 Status in the Financial World,
And the No. 1 position in corporate preference,
GS is society's and the customer's most respected corporation!

GS has succeeded in attaining its goals of securing Top 5 status in the financial world, implementing future growth engines and ranking 1st in corporate preference as part of an effort to achieve its mid-to-long-term goal of realizing the vision of 'Value No.1 GS Adored by Everyone'.

In securing the Top 5 status in the financial world, GS focused on interest-oriented qualitative growth and plans to proactively explore new business projects and continue to increase local projects.

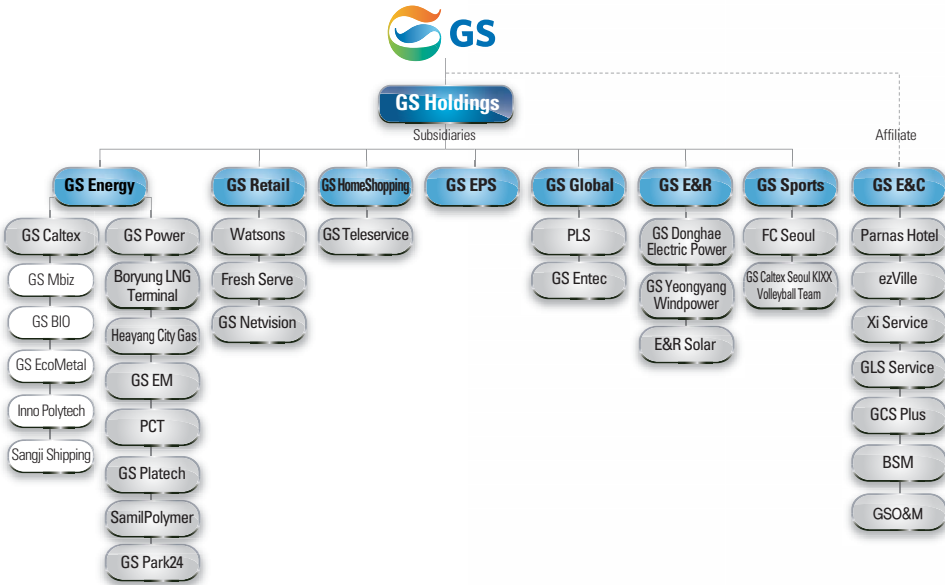
Given that our mission is to emerge as a valued and respected corporation by our customers and society while realizing sustainable growth, GS aims to rank 1st in customer preference and become the most popular employer for the purpose of realizing sustainable growth.



Corporate Identity: Together the three combine to provide a simple yet dynamic impression that also expresses the sun, sky, ocean and earth.

- Orange: Energy, Dynamism, Sun & Passion
- Green: Environment, Ground, Unlimited Potential, Growth, Determination & Regard
- Blue: Leadership, Excellence, Solidity, Sky & Creativity

Logo: Our logo represents the determination of GS Group to ensure Good Service, Great Satisfaction, Great Solutions and Great Success.



A sustainable Global Company

Leaping towards Global Top Tier
Even today as it always does, GS E&C is vigorously advancing
towards the goal of “The World’s Best”.



VISION & CORE VALUES

2

GS E&C has started vigorous leaping toward Global Top Tier Corporation beyond the best of Korea!
We sincerely promise to stand tall as a corporation which provides the best value to clients.



Great Company

GS E&C

GS E&C will remain focused on progress ads the sustainable leader that fulfills its social responsibilities and pursues sustainable growth and development



Sustainability management

Sustainable management targets

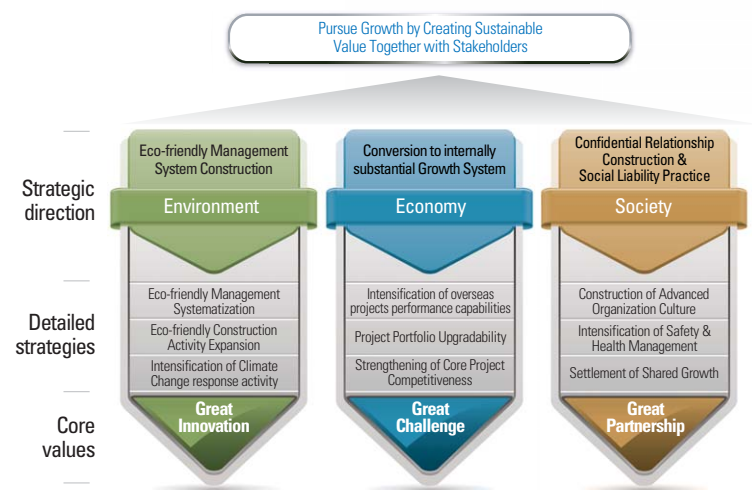
GS E&C will leap into the ranks of Top-Tier construction companies via the priority on creating great customer value and being the best partner, growing together with stakeholders.

Sustainable management strategy

GS E&C is promoting its Vision of 'Pursuit of Growth through Sustainable Value Creation along with interested parties' by establishing an 'Eco-friendly management system construction', 'Conversion to an internally substantial growth system', 'Building a trusted relationship & Social responsibility', and drawing action tasks. This is closely connected with GS E&C's core value- 'Change', 'the Best' and 'Reliability'. GS E&C aspires to be a leading corporation of sustainable management through sustainable management internalization through systematic task practice.

GS E&C established 9 different specified strategies, targets and action plans in step based on our vision for achieving sustainability.

GS E&C Strategies for Sustainability



Social Responsibilities

By supporting study room in homes and playgrounds for children of low income class families, and social welfare facilities, GS E&C supports children's dreams and hopes



GS E&C will continue to do our best to fulfill our roles and responsibilities as a corporate citizen. To do so, we will actively participate in efforts to promote common values by increasing investment in social programs and engaging in public policy projects.

Shared Growth

<Xi Love Sharing Volunteer Group>, consisting of GS executives and staff members, is putting sharing management into practice through customized volunteer service comprising the social welfare field (kimchi making for the winter for low income bracket/heating oil support, labor & management joint blood donation event, year-end executives and staff members' fundraising activity, etc.), education & culture field (study room, college student application for volunteer group, etc.) and environment and safety field (playground, etc.).

Ethical Management

GS E&C, recognizing the importance of practicing EM and social responsibility, has tried to pursue the transparency in corporate management based on the company vision and to values that can be shared by stakeholders.

Sharing Management

The GS E&C employees in the Xi Volunteer Corps hold social welfare (caring for the elderly, etc), education & culture (scholarship support, etc), and environment & society (Hopes & Dreams Playgrounds, etc)

SOCIAL WELFARE



- Provision of Kimchi and heating fuel to low income families
- Activities in cooperation with the employer & employee (The annually Blood donation event / Visit and donations to the elderly living alone)
- The year-end employee fundraising event (helping the developing countries)
- Community activities around sites
- Supporting the livelihood of the disabled

EDUCATION & CULTURE



- Provision of Dream and Hope Study Rooms for children of low income families
- Provision of Happy after-school Classes for social welfare facilities
- Supporting talented students with scholarships
- Supporting children of low income families with education funds

ENVIRONMENT & SAFETY



- Provision of Dream and Hope Playgrounds for social welfare facilities
- Flood restoration and Environmental remediation in areas close to domestic construction sites

Global Value GS E&C

Creating the best value with
pioneering technologies

RESEARCH & DEVELOPMENT

5

GS E&C, making continued investment in R&D in order to construct the dream and future of the world citizens! Its Technology Headquarters of GS E&C, which can be called the core of GS competitiveness of the construction area, has set up the 'Global Technology HQ providing an authentic value by pursuing differentiated technology and excellence' in an effort to realize Vision 2020 as the Future Vision, and the Technology HQ is promoting "Enrichment and Expansion of strength holding technology", "Construction & Intensification of Global Technological Resources System" and "Strengthening of Global Technological Capabilities" as its long-term strategy.

A Vision of the Future

Global Technology HQ,
providing an authentic
value by pursuing
differentiated technology
and excellence

Strategic Direction

A Project Power
Source of Technological
Leadership

Construction &
Intensification of Global
Technology Support System

Strengthening of
Global Technological
Capabilities

Priority Tasks to be Promoted

Enrichment and Expansion of Holding Strength Technology

Cost Innovation/ Intensification of Differentiated
Technology Development

A Promising Project in the Future/
Technology Forecasting Systematization

Systematization and Enlargement of Global level
Technology Support Business

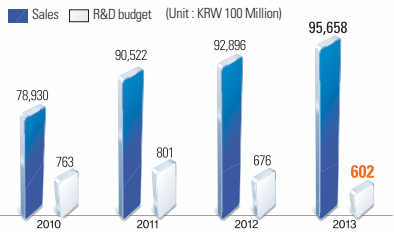
Establishment of Cost-based Technology DB System &
Availability Intensification

Nurturing and Expansion of Global Competence Manpower

The Current Status of R&D investment

GS E&C continued invest in research and development as the leading company in the construction industry.

R&D budget				
R&D budget	2010	2011	2012	2013
Sales	78,930	90,522	92,896	95,658
R&D budget	763	801	676	602
Ratio of investment in R&D	1.0%	0.88%	0.73%	0.63%



GS E&C Research Institute

- **Major facility:** Environmental Research center / Clean room lab / Housing environment lab / Material Research center / Smart CEM control center / Subsidiary Facilities and Micro-grid Verification Facilities
- **Site area:** 20,174 pyeong / Building area: 1,803 pyeong (Total floor area 5,579 pyeong) /
- **Location:** 417-1, Deokseong-ri, Idong-myeon, Cheoin-gu, Yongin, Gyeonggi-do, Korea

6

DIGITALIZED SYSTEM

The Current Status of the GS E&C System

The digital management of GS E&C is divided into customer relationship management (CRM), supply chain management (SCM), knowledge management (KM) and finance management (FM). CRM is subdivided into corporate customers for the housing, architecture, civil engineering, plant and power plant environment businesses, and individual Xi customers. We are managing to build a CRM that is suitable to the characteristics of each area's customers. As for SCM, the core of the construction industry, system linkage has been enhanced throughout the entire project sector through collaboration with clients, partners and vendor. Centering on TPMS, a main system in the business management sector and transparent processes, cost management has been conducted in all projects on a real-time basis to realize earlier settlement of digital management. In addition, the company provides accurate information on fund receipts and disbursement to both management and shareholders based on knowledge management received in the KM and FM sectors so as to realize differentiated competitiveness.

Distinctive, Value-oriented Customer Management

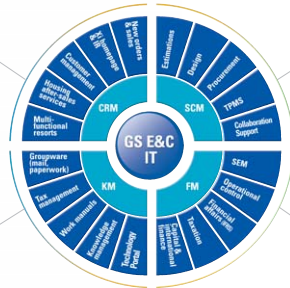
CRM Customer Relationship Management

- Residents & advance buyers
- Resort users
- Financial institutions & investors

Improvement of Core Competence through Advanced Knowledge Management

KM Knowledge Management

- Employees



Project management through Strategic Partnerships

SCM Supply Chain Management

- Construction clients
- Vendors of materials
- Supervisory firms
- Subcontractors

Value Management through Balanced Performance Control

FM Financial Management

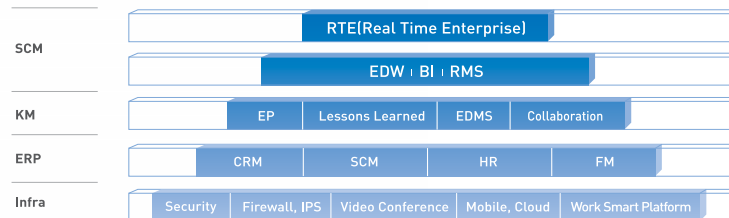
- Top Management
- Shareholders

*TPMS (Total Project Management System)
*SEM (Strategic Enterprise Management)

Systematic support to realize Vision 2020

To enhance operational efficiency, GS E&C has formed the optimal networks between the Head Office and construction sites, and monitoring 24hours inside and outside Korea. Links to all construction sites are subject to security controls 24 hours a day. The company has used this platform to complete a consolidated construction data system for everyday operation before advancing into RTE (Real Time Enterprise) and the Work Smart Environment at the strategic level.

Offering the Ultimate IT Solutions to Achieve Vision 2020

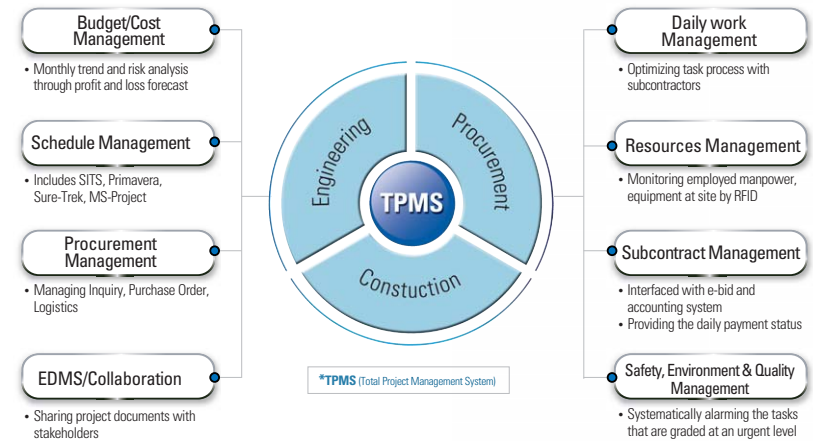


7

ADVANCE MANAGEMENT SYSTEM

Total Project Management System

TPMS, an integrated Project Management System focused on profit and loss, process, operate, cost innovation, manages budget/cost, schedule, procurement, resources, subcontract, documents and SEQ.



Mobile TPMS (Total Project Management System)

All GS E&C construction sites are utilizing this system. In 2011, we developed a TPMS application for smart phones called M-TPMS that enables on-site workers to manage construction projects anytime from anywhere.



GS E&C BUSINESS AREA



Plant

- Petrochemical
- Oil & Gas
- Environment

Architecture

- Office Building
- Education, Research & Hospitals
- Culture, Leisure & Sports
- Clean Rooms & Manufacturing Facilities
- Logistics & Remodeling
- Housing
- Development

Power

- Combined Cycle/Thermal Fired/Nuclear Power Plant
- Renewable energy
- T/L & Substation

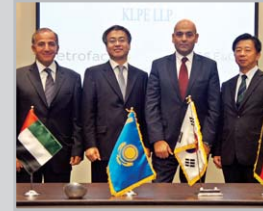
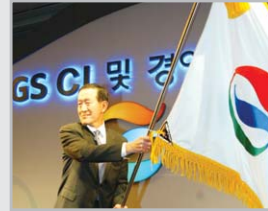
Infra

- Underground Spaces & Railway
- Roads & Bridges
- River Developments & Marine Works

Leisure

- Resorts
- Golf Courses & Hotels

GS E&C HISTORY



1969

• Lakhee Development Co., the origin of GS E&C, was established

1982

• Awarded US \$1 billion Construction Export Tower for overseas construction.
• Established a local incorporation in the U.S.

1995

• The company's name was changed to LG Construction Co., Ltd.
• Acquired Certificate of ISO 9001 International Quality Management Standard.

2000

• Seohae Grand Bridge received a Presidential Award.
• Awarded the best business manager prize in (97 construction management Grand Prize) by Korea Management Association.

2002

• The Xi apartment brand was launched.
• Awarded for corporate PR in World Advertisement Grand Prize International Quality Management Standard.

2005

• The company's name was changed to GS E&C Co., Ltd. (GS Group officially launched.)
• Selected as a company of good corporate governance by Korea Exchange.

2009

• 2009 13th award ceremony for the ideal living apartment-received the Banpo Xi Presidential Award
• 2009 Global Management Convention - grand prize in the Customer Satisfaction Management sector
• 2009 Korean Architecture Award - grand prize in the private sector
• Received the 2009 'Most Reliable Korean Corporation Award' hosted by the Korea CEO Association

2010

• Integrated into DJSI Global Company
• Announcement of core value for the creation of a new organization culture
• Selected as the world's 36th largest constructor by ENR, a worldwide construction weekly magazine in Europe, in 2010

2011

• 2011 Received the Forbes CEO Award
• 2011 Received the KRCA (Korea Reader's Choice Award) in the Korea Sustainability Competition
• 2011 Xi App Received International Business Awards in three sectors simultaneously
• Received the iF Design Award in Germany for 5 years consecutively
• Integrated into DJSI Global Company for 2 consecutive years
• Received The Most Trusted Company Award for 3 years in a row

2012

• Received the 2012 The Best Brand Award - Xi Apartment Sector
• Included in the 'Dow Jones Sustainable Management Index World' for 3 years in a row and selected as a Super Sector Leader Company
• Received The Most Trustworthy Company Award for 4 years in a row
• Received BIM Awards 2012 in the construction sector organized by Building Smart Association
• Ranked 34th in the world by ENR, a world-renowned construction magazine

2013

• Grand Prize awarded for Korea First Brand (by Korea Consumer Brand Committee) - Xi, awarded the first prize in Apartment Section for 8 years in a row
• The 16th Award Ceremony of Civil Structure of the Year (Korea Civil Association) - Gold Prize for Mokpo Bridge
• Award Ceremony of the 8th Asia Construction Award (Asia Economy) - Grand Prize for Win-Win Cooperation
• Unincluded in the 'Dow Jones Sustainable Management Index World' for 4 years in a row
• GS INIMA, received PIA (Project Innovation Awards) by IWA (International Water Association) - Energy Saving Technology using a desalination hydrostatic pressure
• Awarded by Government for the 1st Korea Being Loved Enterprise (the Ministry of Industry and Commerce) - Selected as the Being Loved Enterprise

2014

• The number one Korea's first brand award in apartment for the third consecutive year (Korea Customer Council)
• Golden award for the best structure at the 17th annual Civil engineering day Ceremony (by Korean Society of Civil engineers) - Yeosu Bridge
• Won the 2014 Korea Architecture & Arts Grand Prize (Ministry of Land, Infrastructure, and Transport, Korea Institute of Registered Architect, Daily Seoul Economics), Won the Grand Prize in the public sector of the National Museum of Modern & Contemporary Art, Korea, Won the Grand Prize in Apartment Housing sector at Mecenatpolis, Runner-up Prize at NC Soft Pangyo R&D Center, Runners-up Prize at Chuncheon Naver Data Center (November 5)

1969~1993

1969 Established RAKHEE Development Co., Ltd.
1975 Changed the company name with LUCKY Development Co., Ltd.
1977 Established LUCKY Overseas Construction Co., Ltd.
1979 Merged LUCKY Overseas Construction Co., Ltd and selected as Housing Construction Company by the Ministry of Construction
Executed IPO (Initial Public Offering)
1981 Established Lucky Development (Arabia) Ltd.
1983 Established Lucky Development International Inc. in USA
1988 Lucky Geumsung USA Headquarter started
Constructed UMAM University Sports Center / Moved the company building to Yeokjeon Bldg.
1989 Established Lucky Development Inc. in Saipan
Announced the 21C Vision "The No.1 Developer in Korea", "International Total Construction Company"
1991 Obtained the license of construction of Japan, Published "The 20 Years Construction History of Lucky Development"
1992 Obtained the patent for Movable Compartment for Variable Wall Construction of Apartment, Selected as the No.1 Construction Company for industrial disaster prevention among top 30 construction companies
1993 Obtained the license of construction ability for Nuclear Power Plant Facility from ASME / Established Lucky Thai Engineering Construction Co., Ltd. in Bangkok
Obtained the patent for Waste Incinerator using a Counter flow Rotary Kiln

1994~2001

1994 Contracted with CSCEC (China State Construction Engineering Corporation Ltd.) for construction cooperation
1995 Shin Seung-Gyo, Vice President (Representative) Changed the company name with LG Construction Co., Ltd. / BIO-NET Construction Technique for Sewage Treatment, assigned as the technology of the Ministry of Construction and Transportation
Announced "Jump-up 2005"
1996 "SUNWON LG Village", selected as Hit Item in the First Half of 1996 by Seoul Newspaper
Obtained the license of environment management system, ISO 14001
1997 Shin Seung-Gyo, promoted to President
Grand prize for "LG Chemical Daedook Laboratory" by "1997 Korea Construction Culture Award" / Received Best Entrepreneur Award from "1997 Construction Management Award" by Korea Management Association and 6 other awards
1998 Min Soo-Ki, inaugurated as the 9th President
"The Building of KP Co., Ltd." awarded by "1998 Korea Construction Culture Award"
LG-HP SUNFLOWER INTERNATIONAL VILLAGE, awarded by the Vietnam Haiphong Council of People's
Selected as one of the Best 30 Companies for "the 2nd Business Information Award" by the Ministry of Information and Communication
1999 LG Construction and LG Engineering merged
Received the "Best Public Announcement Award" by Korea Stock Exchange
2001 LG Construction, selected as the Best Company for Corporate Governance Structure by Korea Stock Exchange

2002~2005

2002 Heo Chang Soo, appointed as Chairman, Representative
Kim Gab-Yeol, inaugurated as the 10th President
Launched a new housing brand "Xi" / Selected as Best Company for Corporate Governance Structure by Korea Stock Exchange / Introduced new apartment brand "Xi" / LG Construction announced "VISION 2010" / Taebaek Line Jecheon-Ssangyong Section 1, Double track railway construction / Goha-Jukkyo road (alternative detour of national road, Mokpo) construction
No.1 design for Turkey Design Deliberation / Plant Project Headquarter: obtained the patent for "Welding History Management Method of Pipe Spool using a bar code"
LG Yangju Xi Site, obtained the certificate for Environment Friendly Construction Site
2004 Awarded for the "Best Case in Environment Section" of "the 3rd Environment Safety Best Case Presentation" by the Council of Korea Construction Economy / Held "2003 Overseas Road Show" in Asia, Europe, and USA / Advanced Nuclear Power Plant Business by winning the order for "New Wolsung Nuclear Power Plant Unit 1&2 Main Equipment Construction"
Received the Grand prize for construction by "2004 Environment Management Award"
LG Construction, selected as the Best Governance Structure Corporate by Korea Stock Exchange
Received the Gold Prize of Gyeonggido Architecture Culture Award
Received Cyber IR Prize of the 6th HANKYUNG IR Award
Received the order for the 1st Road Construction Knowledge Competition
2005 GS Construction and SK Construction Consortium, contracted for 660 million dollar construction of Thailand / "Xi" received the first prize of 2005 Consumer Wellbeing Index and the Grand Prize of Environment Index Award / Contracted for "Linear Alkyl Benzene Plant Construction of Egypt"
Signing Ceremony for "Agreement for Marine Energy Research and Development and its Use"

2006~2009

2006 Signing Ceremony for Execution Agreement of Uijeongbu Light Rail Transit
Signing Ceremony for Research and Development of commercialization technology for tidal power and tide energy / Signing Ceremony for KYUNGBANG K-Project
Signing Ceremony for EPC Contract for Uijeongbu Light Rail Transit
Agreement Ceremony for Private Investment Finance for Uijeongbu Light Rail Transit
Signing Ceremony for Joint Investment Agreement for Unbuk Area
Heo Myung-Soo, inaugurated as the 11th President
Agreement Ceremony for Incheon Combined Power Plant Unit 2
Provisional Contract for Vietnam BT Project
Contracted for Financial Agreement - Vietnam Gucci Golf Resort Project
Delivery Ceremony for Investment Permit Approval for New Town in Nyabe, Vietnam
Joint Venture Signing Ceremony for Saudi Arabia Corporate
Agreement Ceremony for HMC PP in Thailand
Contracted a J/V Agreement for Kazakhstan 195ha Project
2008 Received the order for Thailand LNG Take-over Base
Received the order for UAE Green Diesel Project
Received the order for new project of Kuwait Refinery Plant Complex
Received the order for Tatarstan Refinery Plant from Russia
Received the order for Manila Package No.4 Project from Saudi Arabia
2009 Heo Myung-Soo, inaugurated as the 11th Representative
Contracted a MOU for joint business promotion of wind power generation
Contracted a MOU with LSIS for Smart Grid energy saving architecture business

2010~2012

2010 Contracted a MOU for joint promotion for Incheon Bay Tidal Power Generation Business
GS Construction, contracted an encouragement of technical skill agreement with Human Resources Development Service of Korea / Received the sole order for UAE Ruwais Refinery Plant at 3.6 billion dollars / Completed Qatar Lapan Condensate Refinement Facility Construction / Incorporated as Dow John's Sustainable Management Index (DJSI) World Enterprise
2011 Contracted an agreement for 2011 Green Management Extension Support in Construction Section / GS Construction, incorporated as DJSI World Enterprise for 2 years in a row / Received Germany iF Design Award for 5 years in a row
Received the Reliable Enterprise Award for 3 years in a row
2012 Announced "Vision 2020" in 2012
Launched the small house brand "Xi-Ello" / Merged Inima from Spain
Received the sole order for Saudi Arabia Latic II Project at 1.8 billion dollars
Contracted a MOU for water supply technical cooperation between Vietnam and Korea University
Agreement Ceremony for IRPC Plant Project, Thailand
Contracted a MOU with Korea Railroad Research Institute for GTX Technical Cooperation

2013~2015

2013 Myung-Soo Huh, President, named president of the Korea Federation of Construction
Signed MOU with China State Construction Engineering Corporation Limited
Received the order for Star Project from Turkey at 10 billion dollars
Mr. Byeongyong Lim is named 12th CEO of GS E&C
Received the order for KLPE Project, Kazakhstan at 3.7 billion dollars (1.4 billion dollars for us)
Contracted a MOU for sewage treatment facility project of Youngbo City, Hanam Province, China
2014 Opening Ceremony of GS E&C Mumbai Design Corporation, India
UReceived the order for Clean Fuels Project, Kuwait at 4.8 billion dollars (1.6 billion dollars for us)
UReceived the order for Karbala Project, Iraq at 6 billion dollars (2.3 billion dollars for us)
Conclusion of the Agreement on Low-Grade Coal High Upgradability Project Technology between GS E&C and Korea East-West Power Co., Ltd.
Obtained Order of 1.4 billion dollars on UAE Rumaitha/Shanayel Crude Oil Treatment Plant Project (GS E&C Portion-700 million dollars)
Obtained Order of the World's Longest Marine Bridge-Kuwait Doha Link Bridge Construction (GS E&C's portion-500 million dollars)
Completion of LG Display Gwangghou Plant
2015 Solely Obtained Order of 2.6 billion dollars size of Venezuela Pital-1 Gas Plant Project
Opening Ceremony of GS E&C Philippine Manila Design Corporation

GS E&C · Best Partner, First Company · GS E&C · Best Partner, First Company · GS E&C ·

Best Partner, First Company · GS E&C · Best Partner, First Company · GS E&C · Best

Partner, First Company · GS E&C · Best Partner, First Company · GS E&C · Best Partner,

First Company · GS E&C · Best Partner, First Company · GS E&C · Best Partner, First

Company · GS E&C · BEST PARTNER, First Company · GS E&C

Business Portfolio

Best Partner, FIRST COMPANY · GS E&C · Best Partner, First Company · GS E&C · Best

Partner, First Company · GS E&C · Best Partner, First Company · GS E&C · Best Partner,

First Company · GS E&C · Best Partner, First Company · GS E&C · Best Partner, First

Company · GS E&C · Best Partner, First Company · GS E&C · Best Partner, First Company ·

GS E&C · Best Partner, First Company · GS E&C · Best Partner, First Company · GS E&C ·

PLANT

GS E&C is a **deep root** sustaining the world



GS E&C has grown into the nation's top plant construction company recognized by the world both nominally and virtually in the EPC sector of oil refining/gas and petrochemical industries.

Our engineering and technical skills have been accumulated over many years.

We are continually achieving growth by making diverse efforts to enhance the network and to diversify business in major overseas areas while attempting to proactively advance into future business sectors by enhancing competence in the gas and LNG Liquefaction businesses.



Sohar Aromatics

Petrochemical

Diverse experience of GS E&C has made it possible to establish GS petrochemical plants all over the world.

GS E&C has successfully carried out numerous petrochemical projects such as Ethylene, PP, Phenol/BPA, OCU and LG petrochemical in the Korea market as well as Lidong Aromatics, Thai ATC Aromatics, and HMC PP in the Asia market. Having demonstrated a wealth of experience in petrochemical plant construction, GS E&C was awarded the 1.26 billion dollar Sohar Aromatics contract in Oman, the largest project within Oman in 2006. Successful completion of the project was made in 2010 with an impressive 1.8 million accident-free man hours.

GS E&C looks to expand its business areas into the Mideast Asia, Central and South America, CIS and Africa.

Winning the Egyptian LAB project (E-Lab) has been a trigger point towards this goal.



001P E-LAB

Location: Alexandria, Egypt
- Linear Alkyl Benzene 100,000 MTPY
Project period: 2006. 02 - 2008. 07

002P



002P Sohar Aromatics

Location: Sohar, Oman
- BTX 1,000,000 MTPY
Project period: 2006. 06 – 2009. 11

002P



003P



003P Lidong Aromatics

Location: Lidong, China
- P-xylene 700,000 MTPY
- Benzene 240,000 MTPY
- Toluene 160,000 MTPY
Project period: 2004. 06 – 2006. 07

004P



004P **HMC PP**

Location: Map Ta Phut, Thailand
 - Polypropylene 300,000 MTPY
 Project period: 2007. 07 – 2009. 11

005P



006P



005P **QP LAB**

Location: Mesaieed, Qatar
 - Paraffin 80,000 MTPY
 - LAB 100,000 MTPY
 Project period: 2004. 01 – 2006. 04

006P **ATC No.2 Aromatics**

Location: Map Ta Phut, Thailand
 - Para Xylene 565,000 MTPY
 - Benzene 301,000 MTPY
 - Toluene 60,000 MTPY
 Project period: 2005. 08 – 2008. 10

Oil & Gas

Our ongoing efforts in the Oil & Gas Plant field were finally crowned with successful penetration into the world market, earning a world-class reputation all over the globe.

GS E&C was able to accumulate extensive knowledge in the upgrading of internal facilities with the execution of the GS-Caltex RFCC project in the early 2000s and the No. 2-3 HOU since the mid-2000s. This Corporation has not only strengthened fundamental skills in the oil sector, but has also branched out into the gas sector with the LNG Terminal in Tongyoung, Incheon, and Pyeongtaek, Korea.

GS E&C has built up its overseas experience in Azerbaijan/Thailand/Qatar from the early 1990s, and showed impressive execution, a reliable corporation image and the capability to manage large scale projects such as SP 9 ~ 10 in Iran, Green Diesel in UAE, PTT LNG in Thailand, and Manifa in Saudi.

GS E&C was awarded 2.18 Billion USD contract in 2009 to build natural gas separation facilities in the UAE, which is called the GASCO 4th NGL, and completed successfully in 2014.

Our confidence and effective strategies in carrying out large-scale gas projects and the bright prospects seen in our emergence into the gas sector are the byproduct of our outstanding record.

007P Azerpetrochim CDU / VDU

Location: Baku, Azerbaijan
- CDU 45,000 BPS
- VDU 28,000 BPSD
Project period: 1991. 10 ~ 1994. 04

008P Laffan Refinery

Location: Ras Laffan, Qatar
- Condensate Refinery 146,000 BPSD
Project period: 2005. 05 ~ 2008. 12



009P Black Gold Project

Location: Alberta, Canada
- Wellpad x 2
- Infrastructure / Utility
- SAGD type, Bitumen 10,000 BPD (Phase 1)
Project period: 2010. 08 ~ 2014. 06

010P Salalah Methanol

Location: Salalah, Oman
- Methanol 1,000,000 tons/year
Project period: 2007. 07 ~ 2010. 04

011P PTT LNG

Location: Map Ta Phut, Thailand
5MTA LNG Regasification Terminal
- 160,000KL Above Ground LNG Tank x 2
- LNG Unloading Jetty For LNG Carrier (125,000 ~ 265,000KL)
- SMITA Vaporizing Process
Project period: 2008. 02 ~ 2011. 06

012P

015P **KNPC OCR Revamp of ARDS Unit**

Location: Mina Abdulla, Kuwait
 - ARDS 66,000 BPSD → ARDS 84,000 BPSD
 Project period: 2002. 11 ~ 2004. 10

016P **Kirikkale DHP-CCR**

Location: Kirikkale, Turkey
 - CCR 22,650 BPSD
 - DHP 28,000 BPSD
 Project period: 2005. 01 ~ 2007. 07

017P **No.3 Heavy Oil Upgrade**

Location: Yeosu, Korea
 - VR HCR 60,000 BPSD
 - VGO FCC 53,000 BPSD
 - HMP 110 MMSCFD
 - SRU 450 tons/day
 Project period: 2008. 02 ~ 2010. 08

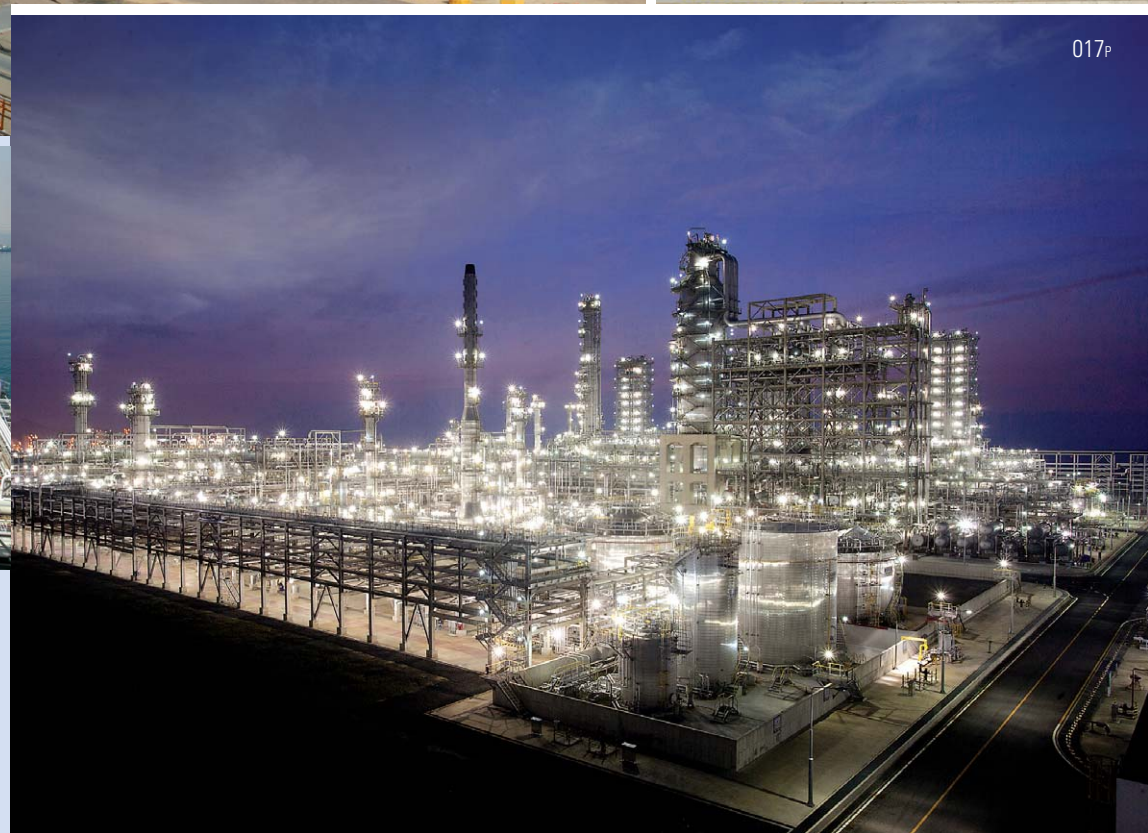
015P



016P



017P



013P



014P

012P **POGC South Pars Gas Field Development Phase 9&10**

Location: Assaluyeh, Iran
 - Gas Facilities 2,000 MMSCFD (500 × 4 Trains)
 Project period: 2003. 03 ~ 2010. 03

013P **Ruwais Refinery Expansion Project (Package 2)**

Location: Ruwais, UAE
 - RFCC & Associated Refining Units
 - 127,200 BPSD
 Project period: 2009. 12 ~ 2014. 12

014P **Ruwais Refinery Expansion Project (Package 7)**

Location: Ruwais, UAE
 - Jetty: 4,400m
 - Berths (3 Ea): 880m (20,000 ~ 330,000 DWT)
 - Marine Loading Arms (39 Units)
 - Main Export Pipeline (27 Unit)
 - Control Bldg. & Fire Water Pump House
 Project period: 2009. 12 ~ 2014. 12

018P



018P 4th NGL Project

Location: Ruwais, UAE

- C3, C4, C5+ TREATMENT
- SRU 30 T/D
- UTILITIES & OFFSITES
- NGL FRACTIONATION 27,000 TPD
- ETHANE (C2) 4,761 TPD
- PROPANE (C3) 7,857 TPD
- BUTANE (C4) 9,362 TPD
- PARAFFINIC NAPHTHA (C5) 5,546 TPD
- CONDENSATE RETURN 6,712 TPD

Project period: 2009. 07 ~ 2014. 12

019P



019P UAE Green Diesel

Location: Ruwais, UAE

- VACUUM UNIT 35,000
- HYDROCRACKER 41,000
- GAS OIL HYDROTREATER 44,000

Project period: 2008. 01 ~ 2011. 11

020P



020P Manifa Gas Facilities Project

Location: Khursaniyah, Saudi Arabia

- Gas Inlet Facilities, Gas Processing: 90 MMSCFD
- Condensate Stripping: 66,400 BPSD
- SRU: 900 TPD x 2

Project period: 2008. 08 ~ 2011. 10

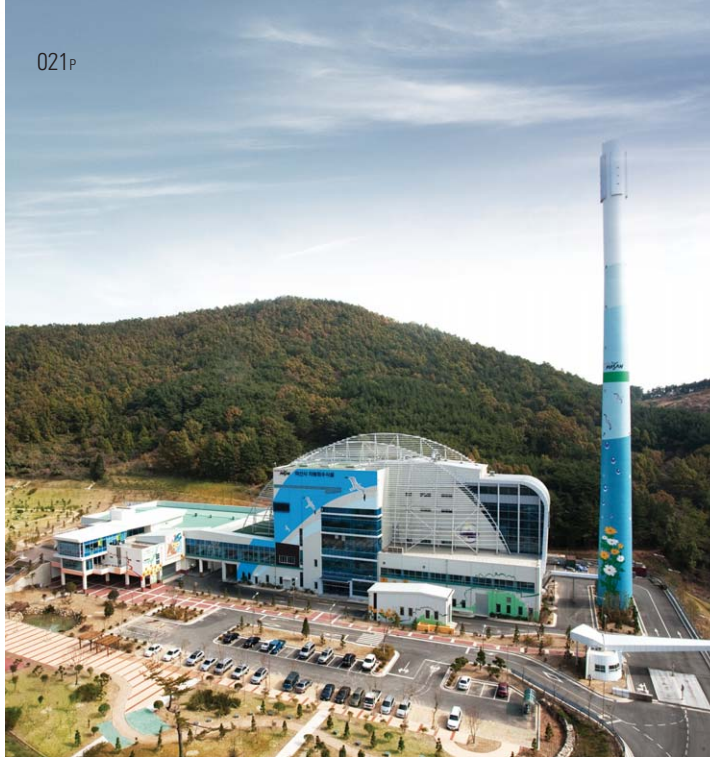
Waste Treatment & Recycling

The harmonization of state-of-the-art technology with the bounty of Nature

GS E&C is the best construction performer in Korea in the area of waste burning disposal facilities and this is demonstrated by the construction of the Mapo Recycling facilities, the Masan city Resource Recovery Facilities, and the Cheongju area incineration facilities.

In the area of industrial wastes incineration, our company's advanced technologies were recognized in the successful completion of waste burning facilities project at the LG Philips LCD factory. In this way, GS E&C is securing differentiated competitiveness in the waste disposal and recycling sectors as seen in our roles at the Jungang Sewage Sludge Treatment Facilities, Capital Area Landfill No. 1 Stabilization Construction, Food Wastes Resource Facilities in Namdong-gu in Incheon and the Capital Area Home Appliances Recycling Center.

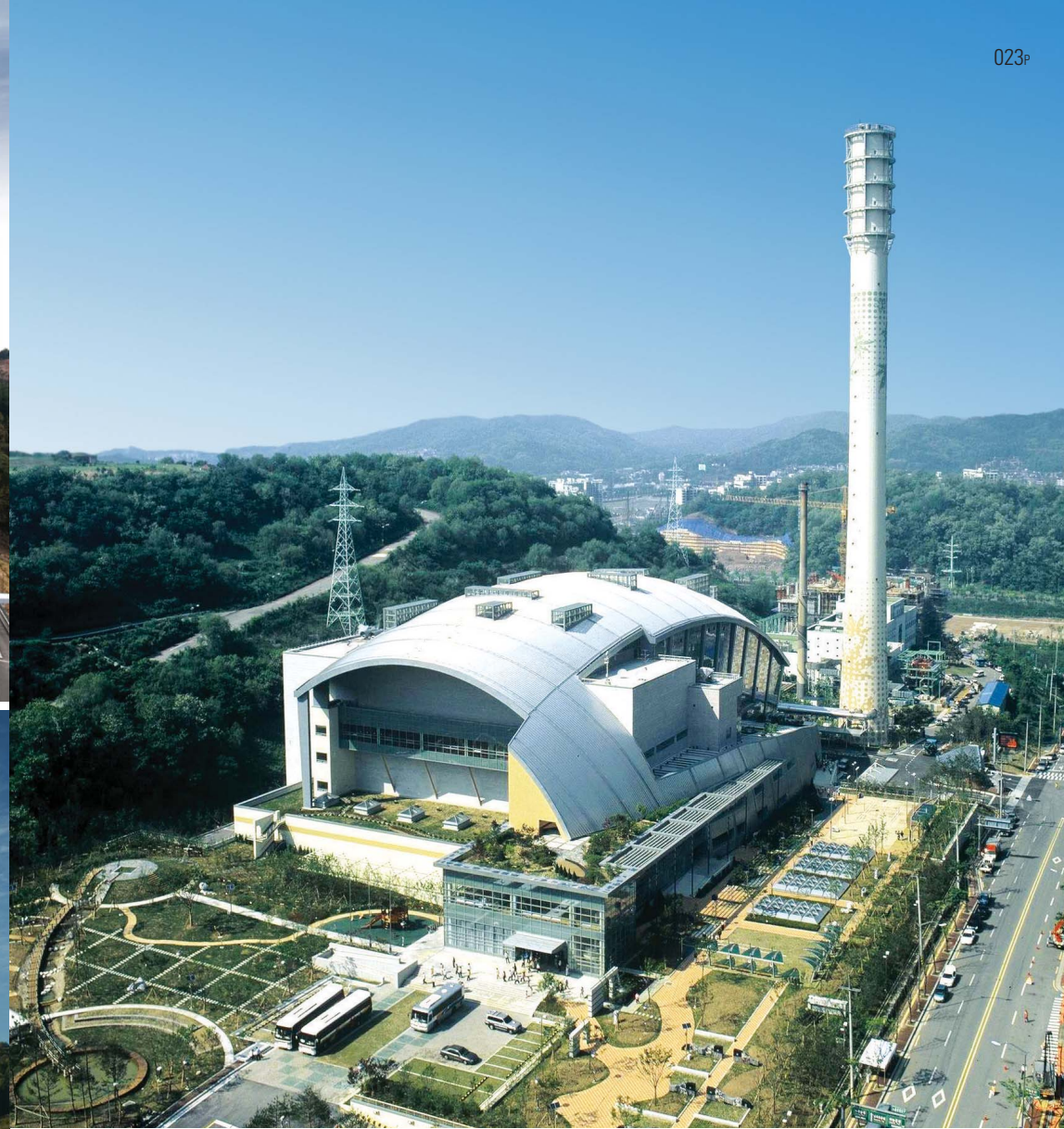
021P



022P



023P



021P Masan Municipal Solid Waste Treatment Plant

Location: Masan, Korea
- Incineration plant: 200 ton/day
- Stoker type
Project period: 2006. 09 ~ 2009. 09

022P Chungju Municipal Solid Waste Treatment Plant

Location: Chungju, Korea
- Incineration plant: 100 ton/day
- Stoker type
Project period: 2007. 11 ~ 2010. 08

023P Mapo Municipal Solid Waste treatment plant

Location: Seoul, Korea
- Incineration plant: 250 ton/day × 3 units
- Stoker type
Project period: 2001. 11 ~ 2005. 04

024P



024P Cheongju Municipal Solid Waste Treatment Plant

Location: Cheongju, Korea
 - Incineration plant: 200 ton/day
 - Stoker type
 Project period: 2006. 09 ~ 2009. 03

025P



025P Dalseong Industrial & Municipal Solid Waste treatment plant

Location: Taegu, Korea
 - Capacity: 70 ton/day
 - Pyrolysis melting type
 Project period: 2006. 04 ~ 2009. 12

026P



026P Jecheon Municipal Solid Waste treatment plant

Location: Jecheon, Korea
 - Incineration plant: 50 ton/day
 - Stoker type
 Project period: 2006. 03 ~ 2008. 08

027P

027P Eunpyung MSW Management System

Location: Seoul, Korea
 - Capacity: 48ton/day, Pyrolysis melting type
 - MSW Automation Collecting pipe: 29.1km
 Project period: 2006. 10 ~ 2009. 10



028P Gumi Municipal Solid Waste Treatment Plant

Location: Gumi, Korea
 - Incineration plant: 200 ton/day
 - Stoker type
 Project period: 2008. 07 ~ 2011. 04



029P



029P Hwaseong Municipal Solid Waste Treatment Plant

Location: Hwaseong, Korea
 - Capacity: 200 ton/day
 - Pyrolysis melting type
 Project period: 2007. 04 ~ 2011. 08

Water & Sewage, Wastewater Treatment

Technology that protects nature and man

GS E&C is leading the public project market in the areas of advanced waste water and sewage treatment on the basis of our advanced technology power and construction capabilities. GS E&C is expanding in the advanced waste water treatment area having completed such projects as the Ohsan sewage treatment plant, the advanced waste water treatment in Jeonju and the advanced waste water treatment in the heavy materials recycling center. In this way, our company is a leader in environmental facilities design and construction as demonstrated by our work on the environmental facilities of the LG Philips LCD manufacturing plant. GS E&C's advanced technology and our vast experience in design and construction is making us the "first and best" company, one that has created a strong trust and garnered respect by our customers as a global player in the water treatment sector. Our advance into the overseas markets is best represented by successful projects including the BAPCO waste treatment facilities in Bahrain and the Azzour water conveyance facilities in Kuwait.

030P Jeju Advanced Sewage treatment plant

Location: Jeju, Korea
- Advanced Sewage Treatment: 130,000m³/day
- CNR Process
Project period: 2006. 09 ~ 2009. 05

031P Gunsan Advanced Sewage Treatment Plant

Location: Gunsan, Korea
- Advanced Sewage Treatment: 200,000m³/day
- 4-Stage BNR Process
Project period: 2006. 09 ~ 2010. 03

032P Jeonju Advanced Sewage treatment plant

Location: Jeonju, Korea
- Advanced Sewage Treatment: 303,000/day
- CNR Process
Project period: 2004. 10 ~ 2007. 06

033P Osan Sewage Treatment Plant(Unit #2)

Location: Osan, Korea
- Sewage Treatment: 64,000m³/day
- B3 Process
- Sewage Recycling pump: 52,000m³/day
Project period: 2005. 08 ~ 2009. 08





034P Yeosu Sewage treatment plant

Location: Yeosu, Korea
 - Sewage Treatment: 35,000 m³/day
 - MLE Process
 Project period: 2005. 09 ~ 2008. 04

035P LG.Philips LCD P7 (Environmental facility)

Location: Paju, Korea
 - Wastewater Treatment: 51,000 m³/day
 - Wastewater Recycling: 18,000 m³/day
 - Water Treatment: 40,000 m³/day
 - Deionization System: 2,400 m³/hr
 Project period: 2004. 03 ~ 2006. 10



036P Ilsan Advanced Sewage treatment plant

Location: Goyang, Korea
 - Advanced Sewage Treatment: 270,000 m³/day
 - MLE Process
 Project period: 2006. 12 ~ 2009. 12

037P Jungang Advanced Sewage treatment plant

Location: Seoul, Korea
 - Advanced Sewage Treatment: 880,000 m³/day
 Project period: 2009. 02 ~ 2014. 01





The construction of a building is not merely the creation of a structure but the creation of a new history. GS E&C has created a beautiful and practical base of life and will make history with new constructions that balance high-tech function and formative art.

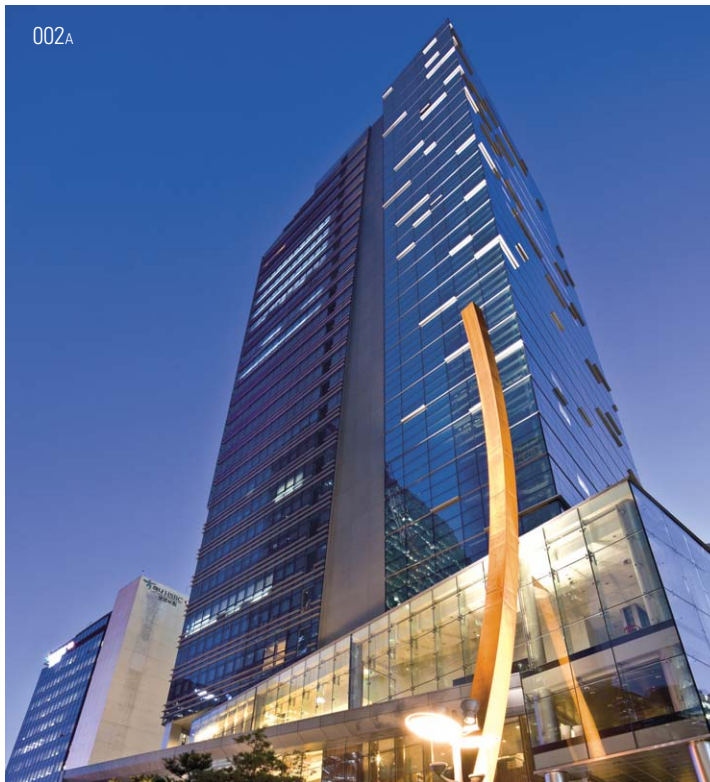


Office Building

001A



002A



True landmarks that change the skyline of a city

The office buildings constructed by GS E&C are not mere facilities for work but landmarks comprising the image of a city. They also show the character and competitiveness of the tenant companies. With our refined technology and extensive experience, GS E&C is building high-tech intelligent buildings equipped with convenient functional aesthetics, differentiated designs and superior construction. World-class office buildings such as the GS Tower, COEX Convention Center, ASEM Tower and Seoul Central Post Office have become representative landmarks in Seoul. Internationally, we have built the LG Beijing Tower which reveals the superior technological powers of GS E&C to the world. Currently GS E&C is focusing our capabilities on the construction of high-tech buildings that integrate state-of-the-art technologies with businesses by reinforcing our abilities for the planning, constructing and engineering of modern high-rises.

003A



001A Gwangyang Port Operation Center

Location: Gwangyang, Korea
 - Total floor area 18,460 m²
 - B6~28F
 - B1~19F
 Project period: 2004. 12 ~ 2007. 05

002A Ferrum Tower

Location: Seoul, Korea
 - Total floor area 55,692 m²
 - B6~28F
 Project period: 2008. 05 ~ 2010. 08

003A GS Tower

Location: Seoul, Korea
 - Total floor area 141,552 m²
 - B6~38F
 Project period: 1994. 12 ~ 1999. 08



004A Seoul Central Post Office

Location: Seoul, Korea
 - Total floor area 72,506 m²
 - B7~21F
 Project period: 2003. 07 ~ 2007. 08



006A Jeollanam-do Government Complex

Location: Muan, Korea
 - Total floor area 79,305 m²
 - B2~23F
 Project period: 2001. 12 ~ 2005. 11

007A



007A Gran Seoul

Location: Seoul, Korea
 - Total floor area 175,536m²
 - B7~24F (105m)
 Project period: 2011. 04 ~ 2014. 03

008A



008A IFC Seoul

Location: Seoul, Korea
 - Total floor area 509,524m²
 - B7~55F
 Project period: 2008. 01 ~ 2011. 12

009A



009A LG Beijing Tower

Location: Beijing, China
 - Total floor area 151,346m²
 - B4-30F
 Project period: 2002. 08 - 2005. 08

010A



010A Fusionopolis 2A - Tower A&B Fusionopolis 2A - Tower C

Location: Singapore
 - Total floor area 84,215m², B3-18(Tower A&B)
 - Total floor area 19,418m², B2-5F (Tower C)
 Project period: 2011. 11 - 2014. 3 (AB)
 2011. 12 - 2015. 2 (C)

011A



011A LG Twin Tower

Location: Seoul, Korea
 - Total floor area 157,835m²
 - B3-34F
 Project period: 1983. 06 - 1987. 06

Education, Research & Hospitals

Function and aesthetics come alive
in the spaces we create

GS E&C possesses extensive experience and excellent technological power in educational, research and hospital facilities that pursue functional space and aesthetic space at one and the same time. For the construction of educational facilities that need to be designed and constructed with an understanding of geography, culture and academic needs, high-tech research facilities where various technical researches are carried out, and hospital facilities where optimal traffic lines per space and multipurpose option skills are required. GS E&C combines convenient functions and aesthetics with excellence in technological prowess to maximize customer satisfaction.

012A LG Chem. Institute of Technology

Location: Daejeon, Korea
- Total floor area 22,983 m²
- B2-3F
Project period: 1995. 01 ~ 2004. 09

013A Residential Complex in Imam University

Location: Riyadh, Saudi Arabia
- Total floor area 50,947 m²
- Accommodation & support facilities
Project period: 1996. 10 ~ 1997. 06



014A General Hospital of Dongguk University

Location: Ilsan, Korea
- Total floor area 92,276 m²
- B2-12F
Project period: 1999. 11 ~ 2002. 09

015A LG Electronics Seo-Cho R&D Campus

Location: Seoul, Korea
- Total floor area 125,070 m²
- B5-25F
Project period: 2006. 02 ~ 2009. 02

016A



017A



016A Dunsan General Hospital of Eulji University

Location: Daejeon, Korea
- Total floor area 91,741 m²
- B3~16F
Project period: 2001. 04 ~ 2004. 02

017A KT Training Institute, Wonju

Location: Wonju, Korea
- Total floor area 53,245 m²
- B1~7F
Project period: 1996. 11 ~ 2000. 05

018A



018A Hye Chon University Dormitory

Location: Daejeon, Korea
- Total floor area 16,246 m²
- B1~9F
Project period: 2009. 07 ~ 2011. 03

019A Ng Teng Fong Hospital

Location: Singapore
- Total floor area 230,380 m²
- Regional Hospital (8~16F, 700 beds)
- Community Hospital (12F, 400 beds)
- Specialist Outpatient Clinics (8F)
Project period: 2012.06 ~ 2015. 02



019A

020A LS Cable Gumi Dormitory

Location: Gumi, Korea
- Total floor area 16,696 m²
- B2~4F
Project period: 2010. 09 ~ 2011. 05



020A

021A LIG Insurance Sacheon HRD Center

Location: Sacheon, Korea
- Total floor area 48,947 m²
- B2~5F
Project period: 2007. 11 ~ 2011. 05



021A

Culture, Leisure & Sports

A beautiful space upgrading quality of life

GS E&C has applied its differentiated technological power in our numerous achievements in the construction of composite facilities that combine culture, leisure and sports. We provide cultural facilities, luxury hotels, leisure facilities and sports complexes that can accommodate cultural and artistic events. GS E&C has built facilities of living culture located in the local governments of Changwon, Masan, Wonju, and Jinju, Korea. Time Square was created as the landmark of Yongdeungpo. The LG Art Center was lauded for its ideal arrangement of seating and stage, and the main stadium of Imam University in Saudi Arabia stand as sterling examples.

022A



022A LG Art center

Location: Seoul, Korea
- Total floor area 18,713 m²
- 9F
Project period: 1994. 12 ~ 1999. 08

023A



024A



023A Gimhae Cultural Center

Location: Gimhae, Korea
- Total floor area 43,750 m²
- B2~7F
Project period: 2001. 11 ~ 2005. 11

024A KEPCO Cultural Center

Location: Seoul, Korea
- Total floor area 70,602 m²
- B1~17F
Project period: 1996. 09 ~ 2001. 04

025A



025A COEX Convention Center & ASEM Tower

Location: Seoul, Korea
 - Total floor area 554,631 m²
 - B4-41F
 Project period: 1997. 03 - 1999. 12

026A Health Center & Sports Area in Imam University

Location: Riyadh, Saudi Arabia
 - Total floor area 136,110 m²
 - Main stadium / Gymnasium
 Project period: 1984. 05 - 1997. 06



026A

027A Masan 3.15 Cultural Center

Location: Masan, Korea
 - Total floor area 19,812 m²
 - B1-3F
 Project period: 2005. 06 - 2008. 03



027A

028A National Museum of Korea

Location: Seoul, Korea
 - Total floor area 134,560 m²
 - B1-6F
 Project period: 1997. 10 - 2004. 02



028A

Clean Rooms & Manufacturing Facilities

State-of-the-art technology to improve company productivity

GS E&C has unparalleled technological capability in special production facilities such as LCD, PDP, semi-conductors and pharmaceuticals. We also have the best technological power and performance in the industry in the construction of clean rooms. Clean rooms are core technology for factories producing super-precision products. GS E&C build Industrial as well as Biological Clean Rooms essential to the production of pharmaceutical products. The company is now expanding its business areas at home and abroad through the successful implementation of large scale projects including the display production lines at the LG Display industrial complex, the factories of secondary battery and polarizing plates, and the production facilities of the GMP factories of pharmaceutical companies.



029A PLS Pyeongtaek PDI Logistics Center

Location: Pyeongtaek Korea
- Total floor area 20,895 m²
Project period: 2010. 09 ~ 2011. 05

030A Yuhan Pharmaceutical Corp. Ochang Factory

Location: Ochang, Korea
- Total floor area 54,420 m²
- B1~4F
Project period: 2004. 02 ~ 2006. 02



031A LG display Paju LCD Cluster (P7, P8)

Location: Paju, Korea
P7 - Total floor area 668,547 m² / B2~7F
P8 - Total floor area 519,126 m² / B4~9F
Project period: 2004. 03 ~ 2008. 08

029A

031A

030A

Logistics & Remodeling

The magic of architecture can increase the value of the building

GS E&C is leading logistics and remodeling sectors with superior specialty manpower, excellent planning ability, innovative design, perfect construction work and thorough maintenance and services.

GS E&C has successfully completed Block A of the Southeastern Distribution Complex; the largest distribution complex in Korea, and many other large logistic facilities. In addition, the company has extensive experience in remodeling projects including the Samcheonggak, Yongsan Electronics Land and the Export-Import bank of Korea. GS E&C is doing its utmost to maximize customer values by establishing a total solution system that covers the entire life cycle of a building including construction, structural diagnostics and post management.

032A



033A



032A Yongsan ET land / Multiplex Theater

Location: Seoul, Korea
- Total floor area 77,787 m²
- B3-8F
Project period: 2001. 09 ~ 2002. 11

033A Namchon Leadership Center

Location: Seoul, Korea
- Total floor area 6,956 m²
- B3-5F
Project period: 2005. 10 ~ 2006. 09

034A



034A Garden 5

Location: Seoul, Korea
- Total floor area 426,743 m²
- B5-11F
Project period: 2006. 10 ~ 2009. 03

Apartments

High class apartment complexes that take the lead in high-quality residential culture.

GS E&C began to construct apartments nationwide in the 1970s, and we are the leader of the housing industry and residential culture in Korea. 2002, the company undertook a new challenge to become the No. 1 Construction developer in the housing market by introducing a new brand 'Xi'. Xi has become the brand name for the best luxury apartments in Korea and by releasing our best technical skills in the business agency we are providing a higher level of living space. These are the spaces to be envied by all and reflect our fundamental philosophy of grasping customer trends in advance to create a new and better lifestyle. Also, this corporation is leading the housing culture of the next generation by materializing its high-tech energy conservation technologies through Green Smart Xi, an environment-friendly, energy-saving housing design. We have received the most awards in both from national and international in the business world in sectors such as brand competence, customer satisfaction and service from many external organizations including JMAC, JMAM and are winning recognition for our high brand power. GS E&C has supplied apartments to all major cities in Korea including Seoul, Yongin, Suwon, Daejeon, Daegu, Busan and Gwangju and also is showing excellent performance in the reconstruction and redevelopment field. GS E&C will continue to create the residential culture of the future and foster the most desired apartment brand through endless technical innovation and R&D.

035A



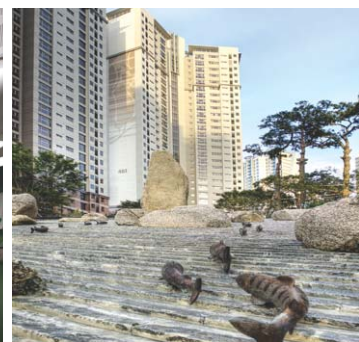
"Xi", the top class apartment brand in Korea | Symbolizing "special intellect" as an abbreviation for eXtra Intelligent, Xi symbolizes top quality apartments for the most discerning customer. Xi is a value oriented high class space created in consideration of its residential values and sensibility. It is a space that goes beyond the simple concept of what a residence should be. GS E&C is providing new space concepts and creating new value that encompasses aesthetic appreciation, culture and ultramodern design. We always consider our customer as special and worthy of consideration and the utmost in service. We are leading high class residential culture by providing a luxurious lifestyle and a higher level of cultural experience.

035A BanPo Xi

Location: Seoul, Korea

- Housing units: 3,410

Project period: 2006. 04 ~ 2009. 01



036A Ilsan Xi

Location: Kyungkido, Korea

- Housing units: 4,683

Project period: 2008. 01 ~ 2010. 09

037A

037A HanKang Xi

Location: Seoul, Korea
 - Housing units: 656
 Project period: 2000. 05 ~ 2003. 04

038A Heights Xi

Location: Busan, Korea
 - Housing units: 1,149
 Project period: 2004. 12 ~ 2008. 03

038A



039A

039A YangJu Xi

Location: Kyungkido, Korea
 - Housing units: 4,902
 Project period: 2003. 05 ~ 2006. 04



040A

040A ChungAm Xi

Location: Seoul, Korea
 - Housing units: 170
 Project period: 2003. 07 ~ 2005. 08





041A HanKang Bamsum Xi

Location: Seoul, Korea
- Housing units: 488
Project period: 2007. 09 ~ 2010. 02

042A SongDo Xi Harbor View

Location: Incheon, Korea
- Housing units: 1,069
Project period: 2007. 07 ~ 2011. 02



043A Haeundae Xi

Location: Busan, Korea
- Housing units: 1,059
Project period: 2010. 11 ~ 2013. 02



044A Yeonji Xi II

Location: Busan, Korea
- Housing units: 1,011
Project period: 2008. 06 ~ 2011. 05

045A Cheongdam Xi

Location: Seoul, Korea
- Housing units: 708
Project period: 2009. 04 ~ 2011. 10

Residential Complexes & Studio Apartments

A high class residential space that contains new added value

GS E&C is basking in the limelight in the residential complex & apartment sectors. We have carried out such landmark projects like Yongsan Park Xi in Seoul, Yeouido Xi and Seocho Art Xi which are amazing residential complexes. We build studio apartments in both high traffic areas and business centers in Seoul Hangangno, Yeouido, Seonreung, Seocho the Gyeonggi Bundang, and the Incheon Airport, and our studio apartments are achieving recognition as the for best value on the market. GS E&C will continue to expand into commercial-residential complexes and studio apartments by securing capabilities for the construction of high-rise buildings.



046A



047A

046A Yeouido Xi

Location: Seoul, Korea
- Housing units: 580
Project period: 2004. 12 ~ 2008. 04

047A Yongsan Park Xi

Location: Seoul, Korea
- Housing units: 310
- Studio: 995
Project period: 2002. 08 ~ 2005. 12



049A



048A

048A Boutique Monaco

Location: Seoul, Korea
- Housing units: 172
Project period: 2005. 05 ~ 2008. 07

049A Mukdong Xi

Location: Seoul, Korea
- Housing units: 411
Project period: 2007. 10 ~ 2010. 12

050A



050A Mecenatpolis

Location: Seoul, Korea
- Housing units: 617
Project period: 2008. 07 ~ 2012. 06

051A



051A Sin-chon Xi ella

Location: Seoul, Korea
- Housing units: 247
Project period: 2012. 04 ~ 2014. 12

052A Yeonhui Xi ella

Location: Seoul, Korea
- Housing units: 186
Project period: 2012. 07 ~ 2014. 01

053A The City Seven Xi

Location: Kyungsang Namdo, Korea
- Housing units: 1,060
Project period: 2005. 06 ~ 2008. 12

052A



053A



Development

Beyond Korea and onto the world stage

GS E&C is successfully carrying out numerous projects such as urban mixed-use development and new city development not only in Korea but also overseas in Vietnam etc.

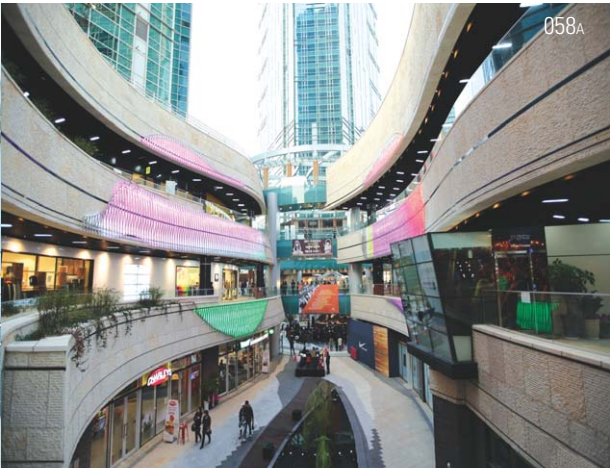
We will solidify our goal of becoming a Global Top Tier company through business diversification, continuous implementation of large development businesses both domestically and abroad, and by seeking out and fostering advanced business.

054A GS Metrocity Nha Be

Location: Ho Chi Minh City, Vietnam
- Site area: 349ha
- Purpose: New Town(Residential, Commercial, Office, School, Leisure, Hospital)
Project period: 2010 ~ 2020

055A Midan City

Location: Incheon, Korea
- Site area: 1,829,945m²
- Total floor area: 1,536,430m²
- Purpose: New Town
(Residential, Commercial, Offices, Hotel)
Project period: 2008 ~ 2020



056A GS Metrocity Long Binh(Q9)

Location: District 9, Ho Chi Minh City, Vietnam
- Site area: 92Ha
- Purpose: New Town(Residential, Commercial, School, Culture)
Project period: 2014 ~ 2020

057A Xi Riverview Palace

Location: District 2, Ho Chi Minh City, Vietnam
- Site Area: 17,209m² - Total Floor Area: 73,099m²
- Purpose: Residential
Project period: 2008 ~ 2011

058A MecenatPolis

Location: Seoul, Korea
- Site area : 37,309m² - Total floor area : 294,613m²
- Purpose : Mixed-use Complex(Residential, Commercial, Office, Culture)
Project period: 2008 ~ 2012



GS E&C will be a Global Top Tier company in the area of power plant construction on the basis of our state-of-the-art technology and perfect construction abilities that bring bright light and energy to the world.





Combined Cycle/ Thermal Fired/ Nuclear Power Plant

Renewable Energy

A leader equipped with real competitiveness

GS E&C has accumulated a wealth of experience knowledge in the construction of electric power plants such as in the successful construction of the composite thermal power plants in Bugok, #5 and #6 thermal power plants in Taean, #7 and #8 thermal power plants in Dangjin and #1 and #2 power plants of the Incheon composite thermal power plant.

The company has also successfully completed construction of Yerevan CCPP in Armenia, Barka3 & Sohar2 power plants in Oman and is currently constructing PP12 power plants in SAUDI ARABIAN, Kais CCPP in Algeria strengthening its status as a global EPC constructor in the overseas power generator markets.

In the nuclear energy field requiring advanced technology and thorough quality control, GS E&C has participated in the construction of the #1 and #2 Shin-Wolsong power plants and the #1 and #2 Shin-Hanul power plants enhancing our competitiveness in the nuclear energy business.



001P Yeongheung Coal Fired Power Plant(Unit5 & 6)

Location: Yeongheung, Korea
- 870MW × 2
Project period: 2011. 04 ~ 2014. 12

002P GS EPS LNG Combined Cycle Power Plant(Unit 1)

Location: Bugok, Korea
- Total 550MW
- Gas Turbine 180MW × 2
- Steam Turbine 190MW × 1
Project period: 1997. 05 ~ 2001. 04

003P Incheon Combined Cycle Power Plant(Phase #2)

Location: Incheon, Korea
- Total 500MW
- Gas Turbine 160MW × 2
- Steam Turbine 180MW × 1
Project period: 2007. 03 ~ 2009. 06



004P Dangjin Coal-Fired Power Plant(Unit 7 & 8)

Location: Dangjin, Korea
 - Total 500MW×2
 Project period: 2003. 12 ~ 2007. 12

005P GS EPS LNG Combined Cycle Power Plant(Unit 2)

Location: Bugok, Korea
 - Total 550MW
 - GasTurbine180MW×2
 - Steam Turbine190MW×1
 Project period: 2005. 12 ~ 2008. 03

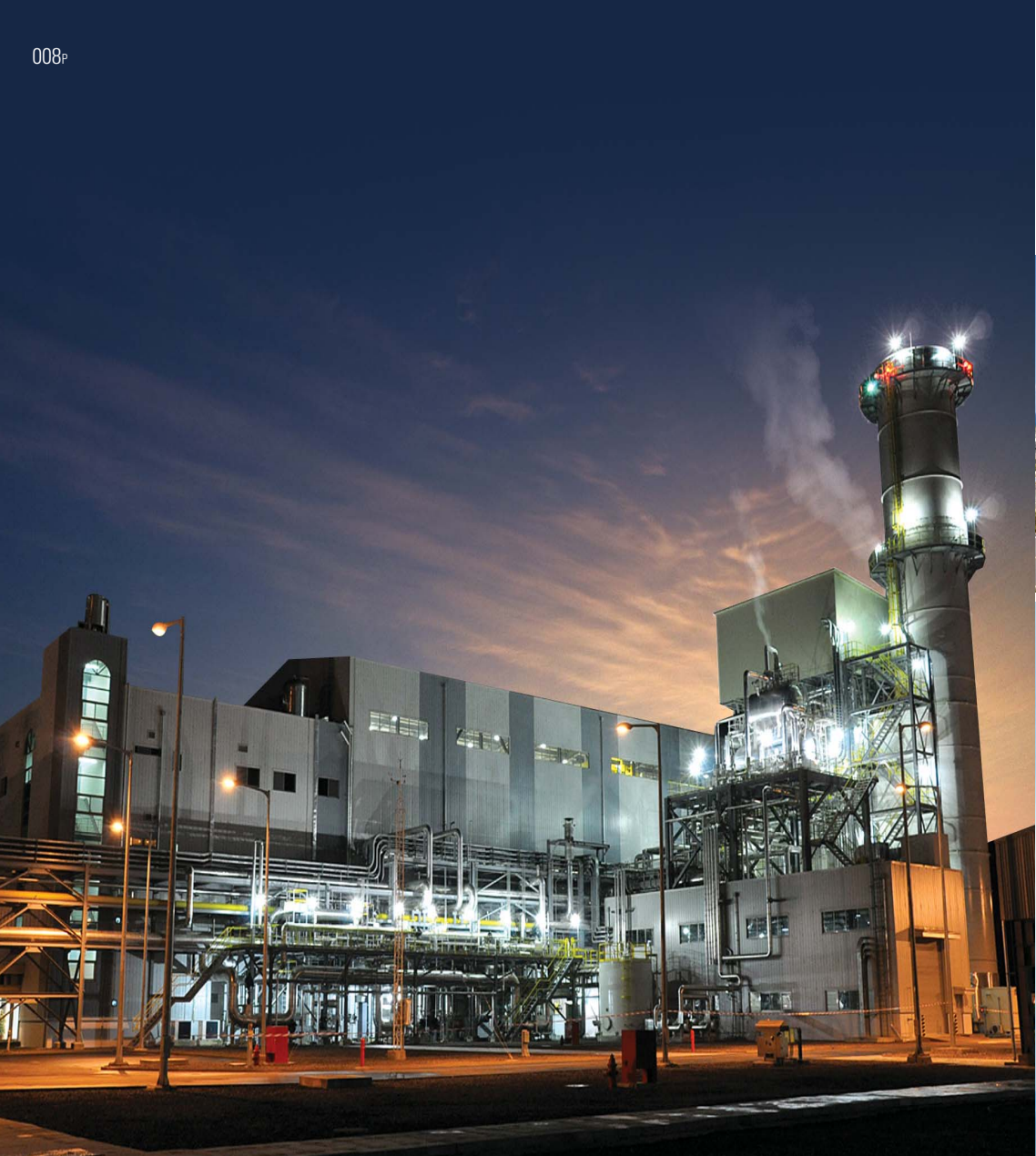
006P Barka3 & Sohar2 IPP Project(Oman)

Location: Oman
 - Total 1,500MW(750MW×2)
 - Barka 3IPP(750MW)
 - Sohar 2IPP(750MW)
 Project period: 2010. 06 ~ 2013. 03

007P Taeon Coal Fired Power Plant(Unit 5 & 6)

Location: Taeon, Korea
 - Total 1,000MW
 - Steam Turbine 500MW×2
 - Boiler 1,690T/H×2
 Project period: 1997. 11 ~ 2002. 09





008P Yerevan Combined Cycle Power Plant
Location: Yerevan, Armenia
- Total 230MW
- Gas Turbine 167MW×1 - Steam Turbine 63MW×1
Project period: 2007. 12 ~ 2010. 04

009P Shin-Wolsong Nuclear Power Plant(Unit1 & 2)
Location: Gyeongju, Korea
- 1,000MW×2
Project period: 2003. 07 ~ 2013. 01



010P Shin-Ulchin Nuclear Power Plant(Unit1 & 2)
Location: Uljin, Korea
- 1,400MW×2
Project period: 2010. 04 ~ 2017. 04



011P Youngheung Wind Power Center
Location: Incheon, Korea
- Total 20MW
Project period: 2010. 01 ~ 2011. 07



T/L & Substation

Light that creates a bright and heart-warming world

In T&D Business, GS E&C has successfully completed construction projects including transmission lines, substations, railway E&M and communication. We have secured global competence with accumulated knowledge, and this has led to 400kV Power Transmission project in Bangladesh, 380kV IRRQAA Power Transmission line project in Saudi Arabia and 220kV Substation Project in Tanzania. In this way, our company is making our move to emerge as a global top tier company in the overseas power transmission and substation EPC markets as well as the railway E&M sectors at home and abroad including Annaba Tramway project in Algeria.

We are also taking the initiative in providing total solutions in the IT sector as a leading company in the ITS and U-City sectors as demonstrated in the belt highway ITS on the outskirts of Seoul, the ITS between Cheonan and Nonsan and U-City in Ilsan.

012P Saudi IRRQAA 380kV OHTL Project

Location: Riyadh, Saudi Arabia
- Transmission: 380kV 225km
- Steel Tower 621 Set
Project period: 2013. 10 ~ 2015. 11



013P Bangladesh Bibiyana-Kaliakoir 400kV Transmission Line Project

Location: Bibiyana-Kaliakoir, Bangladesh
- 400kV Transmission Line 170km(2 Line)
- Steel Tower 410 Set
Project period: 2012. 1 ~ 2014. 07

014P 345kV Underground Transmission Line Project

Location: Paju, Korea
EPC Turn Key : - 345kV Underground Cable: 4.1km
- 345kV OHTL: 1.16km (1 Tower 4 Set)
- 154kV OHTL: 0.3km (Tower 2 Set)
Project period: 2008. 10 ~ 2011. 11

015P 154kV & 345kV Substation at Paju LCD Complex Project

Location: Paju, Korea
- 345kV GIS Substation
- 154kV GIS Substation
Project period: 2004. 03 ~ 2009. 03

012P

013P

014P

015P



As a global leading contractor, GS E&C has been accomplishing creative missions around the world with our wide experience and superior capability. As dots become a line, and lines become a plane, we will continue to strive for creation of more valuable places for the world.



Bridges, Airports, Ports

DOT - A starting point,
the key element to expand the prospect
of human life

Bridges, airports, ports are the starting points of
connecting each different location. They are the core
elements that overcome human limitations and
expand the prospect of human life.

For a long time, GS E&C has been accumulating a
plenty of construction experience in the lands of
mountain, river, and sea. Based on such diverse
experience, we always strive to make human life
better in every corner of the world.

- Mokpo Grand Bridge
- 2nd Namsae Grand Bridge
- Pohang-Yeungilman Port South breakwater
Construction
- Vam Cong Bridge Construction Project, Vinh
Thinh Bridge, Quy Cao Bridge (Vietnam)
- Doha Link Project (Kuwait)
- Ruwais Refinery Expansion Project-PKG7
(UAE)
- PTT LNG Construction (Thailand)
- Puerto Princesa Airport Development Project
(Philippines)

001_I



002_I



001_I **Baekseok Bridge**

Location: Incheon, Korea
- Cable-Stayed Bridge 750m
Project period: 2010. 04 ~ 2012. 06

002_I **Yeosu Grand Bridge**

Location: Yeosu, Korea
- Total Length 1.95km
- 4 Lanes
Project period: 2007. 11 ~ 2012. 10

003_I



003_I **Mokpo Grand Bridge**

Location: Mokpo, Korea
- Total Length 4.1km
- Cable-Stayed Bridge 900m
- 4 Lanes
Project period: 2004. 11 ~ 2012. 12



004_I Seohae Grand Bridge

Location: Dangjin, Korea
 - Total Length 4.08km
 - 6 Lanes
 Project period: 1993. 11 – 2000. 12



005_I Vam Cong Bridge

Location: VamCong, Vietnam
 - Total Length 2.97km
 - Cable-Stayed Bridge 870m
 - 4 Lanes
 Project period: 2004. 11 – 2012. 12



006_I 2nd Namhae Grand Bridge

Location: Gohyeon, Korea
 - Total Length 3.1km, 4 Lanes
 - Suspension Bridge 990m
 Project period: 2009. 10 – 2016. 09



007_I Gyeongin Ara Waterway Section No. 3 Bridge

Location: Incheon, Korea
 - Bridge Length 1.1Km (PSC Box Girder)
 Project period: 2009. 06 – 2011. 12

008_I



**008_I Ruwais Refinery
Expansion Package No. 7
Marine Facilities**

Location: Ruwais, UAE
- Jetty(4.4km)
- 3 Berths(800m), Loading Arms, Pipelines
Project period: 2009. 12 – 2014. 01

**009_I PTT LNG
Marine Facilities**

Location: Map Ta Phut, Thailand
- Jetty(437m)
- Intake & Outfall Facilities
Project period: 2008. 02 – 2011. 06

009_I



010_I



010_I Yeosu Crude Oil 3rd Port

Location: Yeosu, Korea
- Dolphin-type Jetty, 120,000 DWT
Project period: 2009. 02 – 2011. 08

**011_I Incheon LPG Unloading
Facilities**

Location: Incheon, Korea
- Berth Facility: 55,000 DWT
Project period: 1996. 12 – 2000. 05

011_I



**012_I Pohang-Yeungilman Port
South breakwater
Construction**

Location: Pohang, Korea
- Concrete-Caisson Breakwater 500m (14 blocks, 112,000ton)
Project period: 2011. 06 – 2013. 11

012_I



Roads, Railways, Subways

LINE - A path to connect space, the expansion of the route by connecting countless lines

Where there is a road, life becomes richer and culture gets more developed.

GS E&C is very proud of its long time accomplishment of the sophisticated road networks and the world-class high-tech subways (underground area) in Seoul Metropolitan City, the 6th largest cosmopolitan city in the world.

Our cutting edge technology and know-how are once again evidenced in the constructions of the subways and stations in the countries like Singapore, Vietnam, and Qatar. Such technology and know-how will be our valuable assets to make us the leading contractor to construct the transcontinental railroads to connect Korea, Russia, and Europe for the 'Era Of Eurasia'.

- **Seoul-Busan High Speed Railway, Uijeongbu Light Railway Transit, Yeongjong Island Magnetic Levitation Train**
- **3rd National Expressway on NH-2, Surat - Manor Tollway Pkg. No.2, 2nd National Expressway HR-1, Ahmedabad-Vadodara Expressway Ph-2 (India)**
- **Tan Son Nhat - Binh Loi Outer Ring Road, Hanoi-Haiphong Expressway PKG-6&7 (Vietnam)**
- **Downtown Line No. 2 C911, C913, C925, C937 (Singapore)**
- **HCMC Urban Railway Construction Project Line 1 CP2 (Vietnam)**
- **Doha Metro Red Line South Project (Qatar)**



013 Seoul-Busan High Speed Railway

Location: Okcheon, Korea
- Total Length 12.25km
- Double Track 3.59 km
Project period: 1999. 05 ~ 2002. 11

014 Yeongjong Island Magnetic Levitation Train

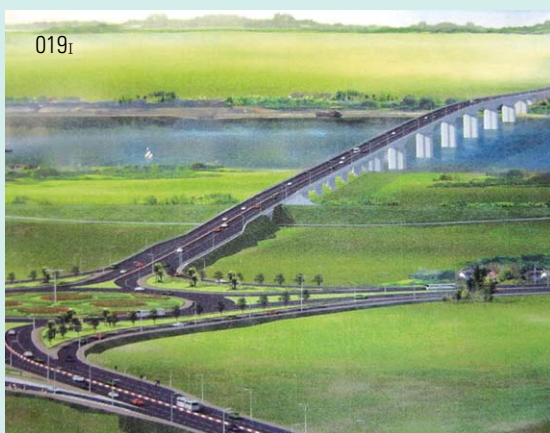
Location: Incheon, Korea
- PSC BOX Girder: 6.11km
- 6 Stations, 1 Depot
Project period: 2010. 03 ~ 2012. 09

015 Electrified Double Track Railway in Jungang Line (Cheongnyangri-Deokso Sec.)

Location: Namyangju, Korea
- Total Length 9.5km, 15 Bridges(1.97km)
- 4 Stations
Project period: 1997. 10 ~ 2006. 06

016 Uijeongbu Light Railway Transit

Location: Uijeongbu, Korea
- Total Length 11.1km
- 15 Stations, 1 Depot
Project period: 2007. 08 ~ 2011. 07



**017_I Expressway No. 30
(Daejeon - Dangjin Section)**

Location: Dangjin, Korea
- Total Length 36.1km, 4 Lanes
- 12 Bridges(7.62km)
- 6 Tunnels(3.74km)
Project period: 2001. 12 – 2009. 08

**018_I Expressway No. 45
(Hyeonpung-Gimcheon Section)**

Location: Gimcheon, Korea
- Total Length 28.8km, 4 Lanes
- 32 Bridges(6.05km)
- 4 Tunnels(7.7km)
Project period: 2001. 12 – 2007. 12

**019_I Vinh Thinh Bridge,
Quy Cao Bridge**

Location: Hanoi, Vietnam / Haiphong, Vietnam
- Total Length 5.5km
- Total Length 0.5km
Project period: Vinh Thinh Bridge(2012-2014),
Quy Cao Bridge(2000-2002)

020_I Cheonan-Nonsan Expressway

Location: Cheonan, Korea
- Total Length 24.4km, 4 Lanes,
- 3 Bridges(2.54km)
- Tunnel(0.53km)
Project period: 1997. 12 – 2002. 12



**021_I 3rd National Expressway on NH-2,
Surat - Manor Tollway Pkg. No.2,
2nd National Expressway HR-1,
Ahmedabad-Vadodara Expressway Ph-2**

Location: India
- Total Length 213km
Project period: 1995. 01 – 2006. 12



**022_I Tan Son Nhat - Binh Loi
Outer Ring Road**

Location: Ho Chi Minh, Vietnam
- Total Length 13.7km, 12 Lanes
- Nielsen Arch Bridge
Project period: 2008. 07 – 2016. 06





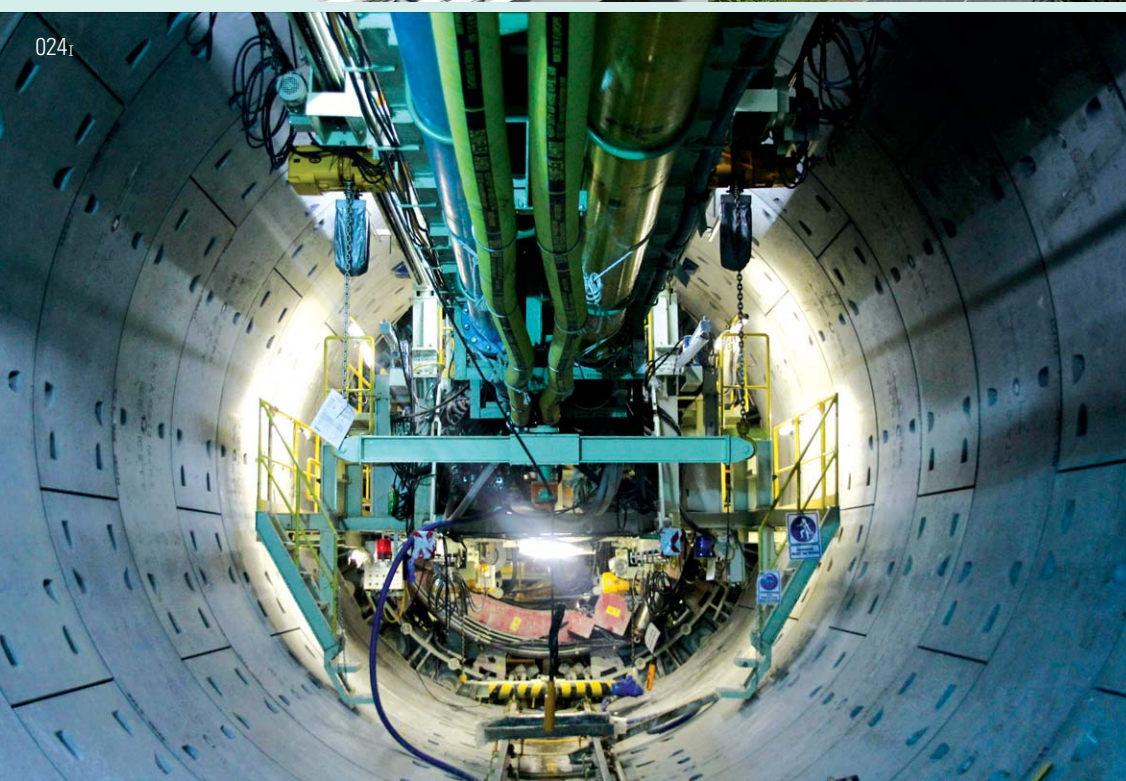
023_I

023_I HCMC Urban Railway Construction Project Line 1 CP2

Location: Ho Chi Minh City, Vietnam
 - Total Length 17.2km, 6 Bridges
 - 11 Stations
 - depot area 210,000m²
 Project period: 2012. 07 ~ 2017. 01



025_I



024_I

024_I Downtown Line Stage2 C911

Location: Singapore
 - Depot
 - Site area: 300,000m²
 - Facilities: road, drain
 - 24 buildings
 Project period: 2009. 03 ~ 2015. 07

Downtown Line Stage2 C913

Location: Singapore
 - 1.65km, 1.23km Slurry Type TBM (φ5.8m)
 - 2 Stations
 Project period: 2009.08 ~ 2015.07

Downtown Line Stage3 C925

Location: Singapore
 - 1.38km
 - 1 Stations (Tampines East Station)
 Project period: 2011. 07 ~ 2018. 06

Downtown Line Stage3 C937

Location: Singapore
 - 1.64km (TBM Tunnel 1.18km)
 - 1 Stations (Fort Canning Station)
 Project period: 2011. 07 ~ 2016. 12



026_I

025_I Seoul Metro Line No. 9 Section No. 904

Location: Seoul, Korea
 - Total Length 2.0km
 - 2 Stations
 Project period: 2001. 12 ~ 2009. 08

026_I Electrified Double Track Railway in Taebaek Line No.1

Location: Jecheon, Korea
 - Total Length 14.29km, 8 Bridges(2.09km)
 - 3 Tunnels(6.75km), 2 Stations
 Project period: 2004. 11. 25 ~ 2014. 6. 30

027_I Electrified Double Track Railway in Gyeongchun Line Section No. 7

Location: Chuncheon, Korea
 - Total Length 12.15km, 5 Bridges(3.22km)
 - 4 Tunnels(8.19km), 2 Stations
 Project period: 1999. 12 ~ 2011. 12



027_I

Industrial Complex, Dams, River Maintenance

PLANE - Fundamental element of shape and space

GS E&C's state-of-the-art technology changes the existing land and terrain into far more beneficial and valuable places. Our experiences from many dam constructions and the Four Major River Restoration Project, one of the Korea's largest national projects in the history, have become the essence of our competency to be the leader of the efficient development and management of water resources. Besides, we have been establishing various industrial complexes to provide more territory for high-tech human activity.

With our creative approach and technological innovation, GS E&C assures you to provide more valuable and beneficial life to the world

- Buhang Multi-Purpose Dam
- Cheonggye Stream Restoration
- Gunjang National Industrial Complex,
Soft Soil Improvement for HOU Project in
Yeosu Industrial Complex
- Four Major Rivers Restoration Project



028_I



030_I



029_I



031_I



032_I

028_I Buhang Multi-Purpose Dam

Location: Gimcheon, Korea
- Total Reservoir Capacity 54.3mil. m³
- Road 12.71km
- 9 Bridges(1.55km)
Project period: 2006. 11 ~ 2014. 09

029_I Gulpo Drainage Canal

Location: Incheon, Korea
- Canal(L = 4.7km, W = 80m)
- Road(11.24km)
Project period: 2005. 05 ~ 2012. 02

030_I Seoul Metropolitan Area Water-Supply System Rehabilitation, Phase 1

Location: Seoul, Korea
- Total Length 53.9 km
Project period: 2008. 07 ~ 2012. 03

031_I Cheonggye Stream Restoration

Location: Seoul, Korea
- 8 Bridges (201.51m)
- Landscaping and Stream Restoration 2.1km
Project period: 2003. 06 ~ 2005. 12

032_I Gunjang National Industrial Complex

Location: Gunsan, Korea
- Area: 1.9mil. m²
- Earthwork: Dredging & Reclamation(15.0mil. m³)
Project period: 1997. 07 ~ 2004. 12



033_I Ecological Improvement in Geum River

Location: Buyeo, Korea
 - Multifunctional Barrage(L=680.0m, H=5.0m),
 - Earthwork: Dredging & Reclamation(3.06mil. m³)
 - Waterpower Station
 Project period: 2009. 11 ~ 2012. 07



034_I Yongsan-River Estuary Improvement Construction No. 1 Project

Location: Damyang, Korea
 - Tidal Gate(480m)
 - Bridge 3 nos(795m)
 - Nature-Friendly Aqueduct
 Project period: 2010. 04 ~ 2015. 02

035_I Ecological Improvement in Nakdong River

Location: Haman, Korea
 - Multifunctional Barrage(L=566.1m, H=13.2m)
 - Earthwork: Dredging & Reclamation(3.42mil. m³)
 - Waterpower Station
 Project period: 2009. 11 ~ 2012. 06

LEISURE

GS E&C is a green space providing a respite for the world



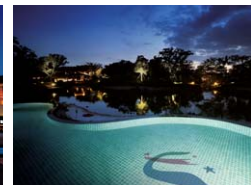
Competitive in the construction of leisure facilities both at home and abroad, GS E&C is offering the leisure of life and joy through the construction of amazing new leisure facilities such as the Gonjam CC and its dynamic courses as well as the Gangchon CC, Elysian CC, Grand Intercontinental Seoul, COEX Intercontinental Seoul and the Elysian Gangchon.

Elysian Jeju

Resorts & Golf Courses & Hotels

Leisure of life, joy and rest

A new turning point has come in the leisure industry with improvement in living standards and the shortening workweek. GS E&C has secured competitiveness in leisure areas by accumulating extensive experience in the construction of leisure facilities such as resorts, golf courses and hotels throughout Korea and abroad. GS E&C has constructed famous golf courses including the Gonjiam Country Club and the Elysian Gangchon Country Club loved by golfers for its challenging holes and unique layout. After achieving fame with the construction of the COEX Intercontinental Seoul and the Ladera Tower in Guam, GS E&C built the Grand Intercontinental Seoul firmly establishing its reputation in hotel construction. In addition, the company is securing composite capabilities for resort facilities from construction to management with the Elysian Jeju and the Elysian Gangchon which are now gaining popularity as 4-season composite family recreation resorts with condominiums, golf courses, ski slopes and many amenities.



001L Elysian Jeju

Location: Jeju, Korea
 - Lot area: 1,752,074 m²
 - Project area: 1,586,784 m²
 - Main Facilities: Golf course/Club house
 Project period: 2002. 11 ~ 2005. 07



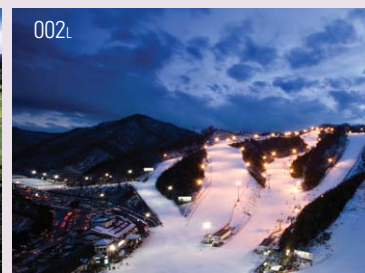
002L



002L



002L



002L



002L Elysian Gangchon

Location: Kwangwondo, Korea
 - Total area: 60,615 m²
 - Main Facilities: Golf course/
 Ski course/Condominium
 Project period: 1999. 11 ~ 2002. 11



003L



003L



005L



006L



007L



005L Laguna Hue Angsana Resort

Location: Vietnam
 - Total floor area: 38,954 m²
 - 1F-5F
 Project period: 2010. 06 ~ 2012. 09

006L Vietnam Haiphong Sunflower

Location: Haiphong, Vietnam
 - Total floor area: 39,600 m²
 - 4 stories with 120 rooms
 Project period: 1997. 01 ~ 1998. 09

007L Konjiam Resort

Location: Gwangju, Korea
 - B3-13F
 - Main Facilities: Condominium/
 Convenient Facilities
 Project period: 2006. 04 ~ 2008. 12

008L COEX Intercontinental Seoul

Location: Seoul, Korea
 - Total floor area: 109,069 m²
 - 29 stories with 654 rooms
 Project period: 1997. 03 ~ 1999. 09



004L



008L



003L Alpensia Resort

Location: Kwangwondo, Korea
 - Total area: 151,800 m²
 - Main Facilities: Hotel/Condominium/ Water park
 Project period: 2007. 01 ~ 2010. 12

004L Grand Intercontinental Seoul

Location: Seoul, Korea
 - Total area: 128,254 m²
 - 33 stories with 597 rooms
 Project period: 1987. 07 ~ 1989. 04

Major References

■

Underground Spaces
Seoul Subway Lot No. 5-35(Wangshipri Station)
U-1-1 Oil Storage
South Oil Storage at Metropolitan Area
Jeongneung Water Tunnel
Incheon Subway Lot No. 1-13 / Seoul Subway Lot No. 6-10
Seoul Subway Lot No. 904 / Seoul Subway Lot No. 301
Seoul Subway Lot No. 705 / Seoul Subway Lot No. 917
Incheon Metropolitan railway 205 sector Construction
Singapore downtown Line2 C913
Shinbundang Line Extension PII Project
Singapore downtown Line8 DT11.9 C925, C937
Jonggak station improvements construction
Dobong-Nowon-Uijeongbu power line construction

■

Roads, Bridges & Railroads
Incheon-Ansan Highway
Honam Highway Expansion (Lot No.8)
Seoul Outer Ring Expressway (Lot No.1-17)
Daegu-Chuncheon Highway
Kyongju Highway Expansion(Suwon-Chungwon)
West Sea Grand Bridge (Lot No.2)
Hongseong-Galsan highway
Northern Urban Highway
Balan-Banwol Highway
Cheonan-Nonsan Highway (Lot No.3,4)
Jeonju-Gui Highway
Ulsin-Jukyeon Highway
Daegu-Pohang Highway
Donghae-Jumunjin Highway
Jukbyeon-Bukmyeon Highway
Highway Expansion (Busan-Eonyang Lot No. 3)
Iksan-Jangsu Highway (Lot No. 5)
Hyeonpung-Kimcheon Highway (Lot No. 1,3,6)
Dulsan-Yeasan Highway
Seoul Outer Ring Expressway (Lot No.4,6)
Busan-Ulsan Highway (Lot No. 6)
Daejeon-Dangjin Highway (Lot No. 4,5,6,7)
Incheon Grand Bridge
Sangjoo Bypass
Yeoju-Yangpyeong Expressway Sector 4
Ulsan National Industrial Complex Connection Road
Mokpo Grand Bridge
Hanoi-Haiphong Expressway Sector 6,7
Yeosu National Industrial Complex Access Road(Cable-stayed Bridge)
Section No.1
Highway No. 25(Namcheon-CheongDo, Gontjae)
TBD Highway
Jungang IC Section 1 road construction
The Road Construction Works for Sillim - Bongcheon Tunnel (Section No.2)
Seoul-Munsan Highway
Gangnam Circulation Expressway Section No.6-1
Section 3 of Samcheok Tonghae Expressway
National Road Construction of Gohyeon - Hadong IC2
Penetration Road construction of Songdo International business center
Gwangju-Wonju Expressway Sector 5
Sangju-Yooncheon Expressway Sector 6
Gori-Pocheon Expressway Sector 7
Gwangyang Bypass
Vinh Thinh Bridge(Vietnam)
Seoul-Busan High Speed Railroad(Lot No. 6-5)
Gwangyang Iron and Steel Mill Construction
Jungang Railroad(Cheongyang- Deoksok)
Okcheon-Jitan Railroad
Seoul-Yuju(Lot No.4)
Seoul-Chuncheon Railroad (Lot No. 7)
Jingu- Gwangyang Double Track Line (Lot No. 5)
Uijeongbu Light Railway Transit
Universal Unique Urban Maglev
Taekbak-jacheon-Ssangyong Double Track Line
Seoul-Busan High Speed Railroad(Lot No. 6-4A)

Honam high speed rail section 5-3
Dong Headphong-samcheok railway section No.2
DAESU Metropolitan Rail Road Line3 section2
Singapore Depot C911
Chaji Grand Bridge- Incheon Sector 2-2 Road Construction
Susoo-Pyeongtaek High Speed Railroad(Lot No. 9)
Honamseon Hamyeol-Hwanglung Dongyun Railroad Crossing Construction
Bosung-Jimsunri railway sector 7
Soosoo-Pyeongtaek high-speed railway sector 3-2
Wonjuo-Gangneung railway sector 7
HCMC MRT Line1 CP2(Vietnam)

■

Harbors & Dams
Port Bridge at Gwangyang
LG Chemical 100,000 DWT Private Jetty Construction
Incheon LPG Vessel Jetty
Yeocheon GS-Caltex Vessel Jetty
Gwangyang Harbor
Pyeongtaek-Dangjin Car Carrier Port No.11 & 12
Dredging of Soil Wastes at Incheon North Port
Port of Sokcho Construction
Pyeongtaek-Dangjin Sea Lane Dredging and Port
U-San New Port Construction (No 6 Terminal)
Buhang Multipurpose Dam
Ruweis Refinery Expansion Project-PK67
Shinma Port Construction
PTT LNG Jetty(Thailand)
Pohang-Youngman Port South breakwater

■

Estate & Development
Gangnam National Industrial Complex
Cheonggye Restoration(Lot No. 2)
Paju LCD Industrial complex
Incheon Free Economic Zone Yeong-jong Sky City Sector 2,3
Seokmoon National Industrial Complex Sector 1,4
Kyungin Waterway Sector3
Gwangyang Port Western Hinterland Phase 1
Incheon free economic zone in cheongna district 2nd section
Gulpo Drainage Canal
Ecological River Improvement in the Kum River in Section 6 (Cheong Nam)
Construction of the Nakdong River restoration Project - Section 18
Yeocheon industrial estate
Youngsan River Dam Structure Repair Project 1 Section
Busan Jinhae Free Economy Zone Development Project 1 Section
Busan New Port Ungdong District Section No.1-1
Parcel 2B-2 land development utilities, infrastructure
Yongbu Industrial Complex
The construction work of Hwasong-Dongtar(2) Housing Estate
Development Project(2-1 section)
Hwasong city urban infrastructure section1
Yedang Industrial Complex

■

Intelligent Building
LG Twin Tower / GS Tower
Korea Industrial Complex Corporation Venture Center
Hung Kuk Life Insurance Sinmunno Office
KPC Tower
Embassy of the Republic of Korea to Iran
LG Beijing Tower
Jeollanamdo New Government Office
LG Gangnam Tower / LG CNS IT Center
Sacheon City Hall / Gwangyang Port Business Facility
Seoul Central Post Office
National Agricultural Cooperative Federation Head Office
LS Tower
LG Telecom Sangam DMC Office
Kyungchang K-Project / IFC Seoul
Pentum Tower

Educational, Research & Medical health care
Saudi Imam University / LG Inhwaeon
DAESU Metropolitan Rail Road Line3 section2
Singapore Depot C911
KT Institute Center
Institute of Technology, Hanyang University
LG Chemicals Institute of Technology
Dongkuk Buddhism general Hospital
Uji University Dursan Hospital
Uijeongbu St.Mary's Hospital
LG Gasan R&D Complex
Nongshim R&D Center
LG Pyeongtaek Digital Park / Seoul Techno Park
LG Electronics, Seoscho R&D Campus / LG Ingenium

■

Cultural, Leisure & Sports Facilities
Gyeongnam Cultural Art Hall
Saudi Imam University Sports Complex
Wonju Chikak Cultural Art Hall
Pohang Cultural Art Hall
LG Art Center
Coex Convention Center & Assem Tower
Korea Electric Power Corporation Cultural hall
New Juan church
Bundang Somang church
National Museum of Korea
Gimhae Culture and Art Center
Duckyang Culture and Sports Center
3.15 Art Center

■

Clean room & Industrial Facilities
Busan Hopo Vehicle Terminal
Samwha Paper Factory
Shinseosan 765KV Substation Project
Ansung Omron Factory
LG Siltron Gumi factory
LG Display Phase 2, Nanjing
Dongbu Electric Rail Car Office
Bank note Plant
Heesung Elec. Daegu Factory 2
Yuhan Pharmaceutical Corp. Ochang Factory
LG Cable Jeonju Factory
LG Display Value Cluster in Poland
Gwangdong G-project
LG Display 345KV GIS Substation
Sam-a-pharma co. Wonju GMP factory
Choongwae pharma co. Dangjin Factory
LG Chem. Ochang Techno Park
LG Display Paju LCD Cluster

■

Logistics & Remodeling
GS Mart, Goyang
Lotte Department Store, Guri (Ex GS Square, Guri)
Sancheonggak remodeling
West-South Zone Agriculture and Fishery Market Remodeling
Yongsan Electronic Land Remodeling
Anyang Station
The Export-Import Bank of Korea Remodeling
Jungbu Market reconstruction
Daebul Free Trade District
Namcheon Leadership Center
Southeastern Seoul Distribution Center

■

Resort, Golf course, Hotel
Grand Intercontinental Hotel
Gonjam Country Club / Guam Ladera Tower
COEX Intercontinental Hotel / Daegu Park Hotel
Gangchon Resort / Elysian Country Club

Saungsan Sandrine Club House
Gonjam Resort / Alpensia
National Safety Experience Theme Park

■

Apartment
BanPo Xi / Hankang Xi / GasPo Xi
SeoCho Xi / BangBae Xi / HwangSil Xi
DouGok ReXie / CheongAm Xi / MunRae Xi
MePo Xi / Heights Xi / SongDo Xi Harbor View
Isan Xi / MokDong Xi / YoungJong Xi
CheongJa Xi / Pal Xi / Barneum Xi / Gwangjang Xi
HaNam Xi / Suli Xi / YongIn Xi
YangJu Xi I-III / SinBong Xi III / JukJoon Xi III
MetroCity I-IV / DongSawon Xi III / SinSanhon Xi III
YongIn Suli LG Village I-IV / Isan DaeWha LG Village
Xi Rienvew Palace / HaewoonDae Xi

■

Studio apartment / Residential complex
SeonPeung Eclat / YokSam Eclat / Bundang Eclat II
Yeouido Eclat / SeoCho Eclat / Incheon Airport Eclat
Hankang Eclat / YongSan Park Xi / Yeouido Xi

Boutique Monaco / The City Seven Xi / Chungmu Xi
Meonapolis / Sin-cho Xi ella / Yoonhui Xi ella

■

Oil & Gas
Azpetrochim CDU/MDU Project (Azerbaijan)
GS Caltex RIOC Project (Korea)
S-Oil BOC Phase-I Project (Korea)
S-Oil BOC Phase-II Project (Korea)
TPI LBOP Project (Thailand)
Shantou LPG Terminal Project (China)
TPI 150,000BPSD Refinery Project (Thailand)
CPC FCCC Project (Taiwan)
KNPC GDD Project (Gas Oil Desulfurization) (Kuwait)
NODCO Refinery Expansion Project (Qatar)
Nonr Abad Compressor Station (Iran)
Catalytic Dewaxing Project (India)
KNPC OOR Revamp of ARDS Unit Project (Kuwait)
Tupras Izmir DHP Project (Turkey)
Izmit DHP Project (Turkey)
GS Caltex No.2 HOU (Korea)
Kinkale DHP-COR Project (Turkey)
POGC South Pars Gas Field Development Phase 9&10 (Iran)
No.4 CDU Dehottlenecking (Korea)
Laffan Condensate Refinery Project (Qatar)
Salalah Methanol Project (Oman)
Manifa Project (Saudi)
PTT LNG Project (Thailand)
Green Diesel Project (UAE)
GS-Caltex No.3 HOU (Korea)
Ruweis 4th NGL Train Project (UAE)
Sah Nihayda Depletion Completion Phase-1 Project (Oman)
Ruweis Refinery Expansion Pkg. 2 Project (UAE)
No.3 LPG Project (Korea)
Used Lube Oil Rerefining Project (Indonesia)
Methanol Tank Terminal (YKK) (Korea)
LNG Terminal Projects (Korea)
ERC Refinery Project (Egypt)
Black Gold Oil Sands Project (Canada)
IRP-II Pipeline Project (UAE)
Nghi Son Refinery & Petrochemical(INSRP) Project (Vietnam)
Clean Fuels Project (Kuwait)
Karabala Project (Iraq)
Rumailha/Shanayel Facilities Phase III Project(UAE)

■

Petrochemical
3rd Train PP Expansion Project (Indonesia)
TPI EBSM Plant Project (Thailand)
Tianjin PVC Project (China)
TPC VCM Expansion Project (Thailand)
LG-Dow Polycarbonate Project (Korea)
LG Chem., VCM-II Expansion Project (Korea)
Samnam, K-4 Project (Korea)
Acetic Acid (Iran)
LG MMA (VM-2) Project (Korea)
GS-Caltex No.3 PX Project (Korea)
GS-Caltex P-Xylene Expansion Project (Korea)
CIC/LAB Revamping Project (Iran)
4th Aromatics (Iran)
LG Chem., Phenol/BPA (Korea)
QP LAB Project (Qatar)
Liding Aromatics Project (China)
Oman Polypropylene Project (Oman)
ATC No.2 Aromatics Project (Thailand)
E-LAB Project (Egypt)
Sohar Aromatics Project (Oman)
HMC PP Project (Thailand)
LPC-NC Project (Korea)
LG Chem., CA/EDO Project (Korea)
LG Chem., Dvs Alcohol Project (Korea)
LG Chem., 40,000 MTPY Acrylic Fiber Project (Korea)
No.2 PA Project (Indonesia)
No.3 PA Project (Indonesia)

Epsilon PP Project (USA)
Panjin PVC Project (China)
Beijing No.2 PVC Project (China)
No.4 DMT Project (Korea)
SNOC-I Project (Iran)
IPFC Propylene Project (Thailand)

■

Power & Energy
Incheon LNG Terminal Project(Korea)
Korea Electric Power, Isan Combined Cycle Power Plant (Korea)
GS EPS Bupok Combined Cycle Power Plant(Unit1 & 2) (Korea)
Korea Electric Power, Taean Coal-Fired Power Plant (Phase 5 & 6) (Korea)
Korea Electric Power, Incheon Combined Cycle Power Plant(Phase #1) (Korea)
Dangjin Coal-Fired Power Plant(Unit 7 & 8) (Korea)
Korea Electric Power, Incheon Combined Cycle Power Plant(Phase #2) (Korea)
Incheon Combined Cycle Power Plant(Phase #2) (Korea)
Yerevan Combined Cycle Power Plant (Yerevan, Armenia)
Shin-Wolsung Nuclear Power Plant(Unit1 & 2)
Barka3 & Sohar2 IPP Project(Oman)
Yeongheung Coal Fired Power Plant(Unit 5 & 6)
Shin-Ulsin Nuclear Power Plant(Unit1 & 2)

■

Waste treatment & Recycling
The 1st landfill site of the Metropolitan Area
LG Philips LCD P4-P6
Mapo Municipal Solid Waste Treatment Plant
Daejeon Incineration Plant No.2
Jecheon Municipal Solid Waste Treatment Plant
Cheongju Municipal Solid Waste Treatment Plant
Masan Municipal Solid Waste Treatment Plant
Eunpyung MSW Management System
Dalseong Industrial & Municipal Solid Waste Treatment Plant
Chungju Municipal Solid Waste Treatment Plant
Daegu Sewage Sludge Treatment Plant
Hwasong Municipal Solid Waste Treatment Plant
Gumi Municipal Solid Waste Treatment Plant
Haengbok-City MSW Automation Collecting System
Geje Municipal Solid Waste Treatment Plant

■

Water & Sewage, Wastewater Treatment
Xongjiang central Sewage Treatment Plant (china)
Kimbhae Sewage Treatment Plant
LG Philips LCD P7
Jeonju Advanced Sewage Treatment Plant
Osong Wastewater Treatment Plant
Yeosu Wastewater Treatment Plant
Jeuu Advanced Sewage Treatment Plant
Osan Sewage Treatment Plant No.2
Isan Advanced Sewage Treatment Plant
Gunsan Advanced Sewage Treatment Plant
Daechungdam Upper Stream Sewage Treatment
Namyangdam Upper Stream Sewage Treatment
Suyoung Sewage Treatment Plant
BAPDO Wastewater Treatment Plant(Bahrain)

■

Development
GS Metecity Nha Be
Midan City
GS Metecity Long Binh(09)
Xi Rienvew Palace
MeonaePalae

SUBSIDIARIES

India
GS Engineering&Construction Delhi Pvt. Ltd.
288A Udyog Vihar Phase 4, Gurgaon, Haryana, India
Tel: +91-9899-980264, 070-4504-9506
Fax: 91-124-4537001

GS Engineering&Construction Mumbai Pvt. Ltd.
2nd Floor, D-Wing, Jolly Board Tower, I think Techno Campus,
Kanjumarg(E), Mumbai, India
Tel: +91-91-6713-9175, 070-4504-9926
Fax: 91-9122-4138-5000

Saudi Arabia
GS Construction Arabia Co., Ltd.
8th FLOOR, AL-Shablan TOWER PO BOX 2920, AL-KHOBAR
31952 KSA
Tel: +966-55-517-8976, 070-4504-9350(151)
Fax: 966-3-887-2550

BRANCHES

UAE
Dubai
GS E&C Corp. United Arab Emirates Dubai Branch
#702 Nouf Tower, Plot No. 129-126, Port Saeed, Dubai,
U.A.E.(P.O.BOX 42451)
Tel: 971-4-250-2452 Fax: 971-4-250-2260

Abu Dhabi
GS E&C Corp. United Arab Emirates Abu Dhabi Branch
#202, 2nd FL, Manazel Bldg, Khalifa Park, Salam St.,
P.O.Box 33873, Abu Dhabi, U.A.E.
Tel: 971-2-449-4011 Fax: 971-2-449-1553

Iran
Tehran
GS E&C Corp. Iran Branch
No. 2617, Dadso building, opposit Mellat Park,
Aghabano St., Vah-e-Asr St., Tehran, Iran
Tel: 98-21-2265-4635 Fax: 98-21-2265-4634

Qatar
Doha
GS E&C Corp. Qatar Branch
Jaidah Square, Level 3, Office 303-B 63 Airport road - Zone 27
Umm Ghuwailina, DohaDoha Qatar P.O. Box 22139
Tel: 974-4455-3614 Fax: 974-4455-0297

Kuwait
Kuwait
GS E&C Corp. Kuwait Branch
Fahaheel Block No. 10, Street No.9, House No. 36, Kuwait
Tel: 965-2562-9124 Fax: 965-2562-9129

Saudi
Riyadh
GS E&C Corp. Saudi Arabia Riyadh Branch
Al-Akasia Center #3 (Office No. 511 & 513) Olaya Street
P.O.Box 301084, Riyadh 11372, KSA
Tel: 966-1-419-1927 Fax: 966-1-419-0425

Iraq
Baghdad
GS E&C Corp. Baghdad Branch
Office No. 5, Sadoun St. Ishtar Hotel, Baghdad, Iraq
Tel: 964-7706-770-711

Bahrain
Manama
GS E&C Corp. Manama Branch
Rayan Residence Bldg No.1099, Road No. 3622,
Seef District 0436, Bahrain

China
GS E&C Nanjing Co., Ltd.
F112 Heping Bldg, No.22 Beijing East Rd. Nanjing, Jiangsu
Tel: 186-5164-3828, 070-4504-9562
Fax: 86-25-8695-9993

Vietnam
GS Saigon Development One-Member LLC
301 Nguyen Van Huong Street, Thao Dien Ward,
District 2, HCMC
Tel: 84-8-3519-2031; 070-4504-9262 Fax: 84-8-3519-2030

GS Nha Be Development One-Member LLC
301 Nguyen Van Huong Street, Thao Dien Ward,
District 2, HCMC
Tel: 84-8-3519-2031; 070-4504-9262 Fax: 84-8-3519-2030

Cambodia
GS Phnom Penh Development Co., Ltd.
132, Street Sotheasros, Sangkat Tonle Bassac, Khan
Chamkarmon, Phnom Penh, Cambodia
Tel: 855-23-216-016; 070-4504-9657(319)
Fax: 855-23-216-113

Algeria
Algiers
GS Engineering & Construction Corp. Algiers Branch Office
44 Rue Chenoua, Hydra, Alger, Algiers, Algeria
Tel: 213-21-609-183 Fax: 213-21-606-490

South Africa
Johannesburg
GS E&C Corp. Johannesburg Branch
1st floor, Building 11B, Woodlands Office Park,
20 Woodlands Dr, Sandton 2191, South Africa
Tel: 27-79-956-3478

Libya
Tripoli
GS E&C Corp. Tripoli Branch
Office 43, 4th Floor Tripoli Tower-I, Tripoli, Libya

Kazakhstan
Almaty
GS E&C Corp. Kazakhstan Branch
Republic of Kazakhstan, Almaty city, Al-Farabi 7, Nurly-tau 5a-116

Azerbaijan
Baku
GS E&C Corp. Azerbaijan Branch
44 J. Jabbarli str. Caspian Plaza III, 11F, Baku Azerbaijan

Turkey
Istanbul
GS E&C Corp. Istanbul Branch
Halkali Mahallesi, Merkez Halkali Caddesi,
No 232, Kucukcekmece, Istanbul
Tel: 90-212-290-7560 Fax: 90-212-290-7561

China
Beijing
GS E&C Corp. Beijing Representative Office
602shi 4haolou qilinshe hesheng wangling Avenue,
Chaoyang District, Beijing, China, 100022
Tel: 86-10-68297100

Canada
GS E&C Construction Canada Ltd.
101-19 Riedel St. P.O.Box 5215, Fort McMurray, AB,
Canada T9H 3G3
Tel: +1-780-559-2828 (1004) Fax: 1-403-261-5351

Spain
GS ENGINEERING & CONSTRUCTION, Spain S.L.
Madrid, calle Quintanavides, numero 17, Edificio 3
Tel.: +34 91 158 5249 FAX :+34 91 158 7712

Inima
GS Inima Environment S.A.
Calle Quintanavides 17 Edif. 3 28050 Madrid
Tel: 34-91-348-4623

Philippines
GS EAST ASIA MANILA INC.
AEON PRIME 12FL NORTH BRIDGEWAY AVENUE COR.
ALABANG ZAPOTE ROAD RUMIVEST CORPORATE CITY,
MUNTINLUPA CITY, PHILIPPINES
Tel: 63-2-658-9300; 070-4504-9201

Shanghai
GS Engineering & Construction Corp. Shanghai Branch
2003 Metro Plaza, No.555 Loushanguan Road,
Chang Ning District, Shanghai 200051 China
Tel: 86-21-6073-6391 Fax: 86-21-6073-6392

Singapore
Singapore
GS E&C Corp. Singapore Branch
8 Temasek Boulevard, #22-05 Suntec Tower 3,
Singapore 039588
Tel: 65-6595-5250 Fax: 65-6595-5269

Vietnam
Hanoi
GS E&C Corp. Hanoi Branch
Unit 2511, F25, Keang Nam Hanoi Landmark Tower
Tu Liem District, Hanoi, Vietnam
Tel: 84-4-3934-5100 Fax: 84-4-3934-5104

Thailand
Bangkok
GS E&C Corp. Bangkok Branch
Unit No.3501/3, 35th Fl., No.135, Empire Tower,
South Sathorn Road, Yannawa, Sathorn,
Bangkok 10120, Thailand

Indonesia
Jakarta
GS E&C Corp. Jakarta Branch
Gedung BRI2, Suite 1703, Jalan Jend. Sudirman

Colombia
Bogota
GS E&C Corp. Bogota Branch
Casa Daryn Carrera 100 No. 100-100 Bogota Colombia

Ecuador
Quito
GS E&C Corp. Ecuador Branch
31-81 Polonia and Vancouver, Quite, Ecuador

Italy
Milano
GS Engineering & Construction Branch
Piazza Velasca 4, 20122, Milano Italy
Tel: 39-02-9768-7611 Fax: 39-02-9768-7634



Global GS E&C is...

Takes on any challenge and never gives up until we see the job through to the end,
We advance without fear of anything or anyone, we create the new.
With our ceaseless spirit of challenge, GS E&C broadens the world and deepens the emotion.

The Power to Create a Splendid World!
We are the Global First & Best GS E&C.